

Appendix C

Photographic Records



Photo 1 Station 0-3 – Unnamed water body – Facing upstream (southwest) showing water body channel with pooling water and dominant detritus, sand and cobble substrate.



Photo 2 Station 0-3 – Unnamed water body – Facing downstream (northeast) showing meandering water body channel.



Photo 3 Station 0-2 – Unnamed water body – Facing downstream (northeast) showing water body channel.



Photo 4 Station 0-2 – Unnamed water body – Road culvert and dominant sand, silt and gravel substrate.



Photo 5 Station 0-2 – Unnamed water body – Facing upstream (southwest) showing water body channel.



Photo 6 Station 0-1 – Unnamed water body – Facing downstream (northeast) showing water body channel.

Client/Project
Nodin Kitagan Limited Partnership
And Nodin Kitagan 2 Limited Partnership

September 2012
160960771

Bow Lake Wind Project

Appendix
C – Agawa Watershed

Page
1 of 31

Title
PHOTOGRAPHIC RECORD



Photo 7 Station 0-1 – Unnamed water body – Showing perched downstream culvert.



Photo 8 Upstream of Station 0-1 – south side of Dump Road. Surficial drainage/roadside ditch – Non REA.



Photo 9 Station 9B1 – Unnamed water body – Facing upstream (east) showing permanent water body.



Photo 10 Station 9B1 – Unnamed water body – Facing downstream (west) showing permanent water body channel.



Photo 11 Station 9B1 – Unnamed water body – Facing upstream (east) showing Hogg Dam Road culverts.



Photo 12 Station 9B1 – Unnamed water body – Showing dominant gravel, cobble, and sand substrate.



Photo 13 Station 9B2 – Unnamed water body – Facing upstream (east) showing water body channel.



Photo 14 Station 9B2 – Unnamed water body – Facing upstream (east) showing seepage area.



Photo 15 Station 9B2 – Unnamed water body – Facing downstream (west) showing culvert and dry, narrow water body channel.



Photo 16 Station 9B2 – Unnamed water body – Showing dominant gravel, sand and silt substrate.



Photo 17 Station 9B3 – Unnamed water body – Facing upstream (east) showing meandering water body channel.



Photo 18 Station 9B3 – Unnamed water body – Facing downstream (west) showing water body channel.



Photo 19 Station 9B3 – Unnamed water body – Showing dominant sand, gravel and cobble substrate.



Photo 20 Station 9B4 – Montreal River – Facing downstream (west) showing Montreal River bay at mouth of 9B1.



Photo 21 Station 9B4 – Unnamed water body – Facing bay (west) on Montreal River.



Photo 22 Station 9B4 – Montreal River – Showing dominant sand, cobble and boulder substrate.



Photo 23 Station 9B5 – Unnamed water body – Facing upstream (south) showing water body running parallel to Hogg Dam Road.



Photo 24 Station 9B5 – Unnamed water body – Facing downstream (northwest) showing water body and culvert.



Photo 25 Station 9B5 – Unnamed water body – Showing dominant gravel, sand and cobble substrate.



Photo 26 Station 9B8 – Unnamed water body – Facing upstream (southeast) showing pool area.



Photo 27 Station 9B8 – Unnamed water body – Facing downstream (northwest) showing shallow water body channel.



Photo 28 Station 9B8 – Unnamed water body – Showing dominant gravel and cobble substrate.



Photo 29 Station 9B9 – Montreal River – Facing upstream (north) showing Montreal River bay.



Photo 30 Station 9B9 – Montreal River – Facing downstream (south) showing Montreal River bay.



Photo 31 Station 9B9 – Montreal River – Showing dominant gravel, cobble and sand substrate.



Photo 32 Station 9B10 – Unnamed water body– Facing upstream (east) showing water body channel.



Photo 33 Station 9B10 – Unnamed water body – Facing downstream (west) showing water body channel and a perched culvert.



Photo 34 Station 9B11 – Unnamed water body – Facing upstream (east) showing water body.



Photo 35 Station 9B11 – Unnamed water body – Facing downstream (west) showing water body and man-made banks/substrate.

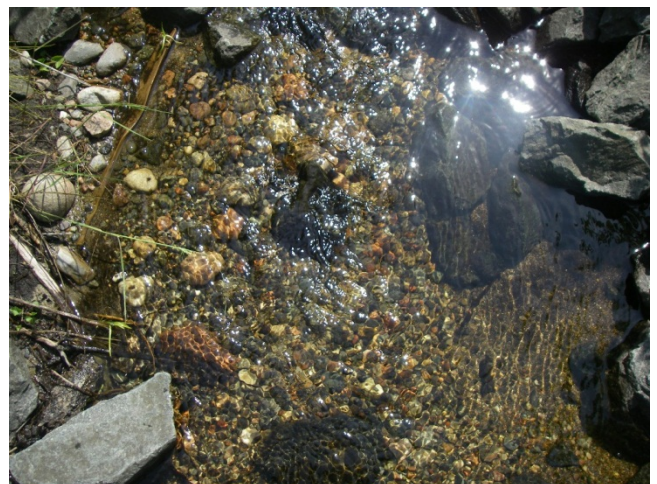


Photo 36 Station 9B11 – Unnamed water body – Showing dominant sand, cobble and gravel substrate.

Filepath: w:\active\60960735\reports\water assessment and water body\appendices\app_c-photographic record\agawa watershed oct 5 2012 ke.docx



Photo 37 Station 9A-1 – Montreal River – Facing north over head pond.



Photo 38 Station 9A-1 – Montreal River – Facing east along shoreline near water extraction point.



Photo 39 Station 9A-1 – Montreal River – Facing west towards dam.



Photo 40 Station 9A-1 – Montreal River – Close-up of bedrock substrate.



Photo 41 Station 10-31 –Montreal River – Facing (west) showing Montreal River bay.



Photo 42 Station 10-31 –Montreal River – Facing (east) showing Montreal River bay.

Client/Project
Nodin Kitagan Limited Partnership
And Nodin Kitagan 2 Limited Partnership

September 2012
160960771

Bow Lake Wind Project

Appendix
C – Agawa Watershed

Title
PHOTOGRAPHIC RECORD

Page
7 of 31



Photo 43 Station 10-31 –Montreal River – Showing dominant bedrock, cobble and gravel substrate.



Photo 44 Station 10-22 – Unnamed water body – Facing (northwest) showing small pond on north side of Hogg Dam Road.



Photo 45 Station 10-22 – Unnamed water body – Facing (northeast) showing small pond on north side of Hogg Dam Road.



Photo 46 Station 10-14 – Unnamed pond – Facing (west) showing water body. Created by road development and natural bedrock dam.



Photo 47 Station 10-14 – Unnamed pond – Facing (north) showing water body with aquatic vegetation and root wad habitat.



Photo 48 Station 10-14 – Unnamed pond – Facing (east) showing water body and natural bedrock barrier.

Client/Project
Nodin Kitagan Limited Partnership
And Nodin Kitagan 2 Limited Partnership

September 2012
160960771

Bow Lake Wind Project

Appendix
C – Agawa Watershed

Title
PHOTOGRAPHIC RECORD

Page
8 of 31



Photo 49 Station 10-27 – Unnamed water body – Facing downstream (north) showing water body and culvert.



Photo 50 Station 10-27 – Unnamed water body – Facing upstream (south) on north side of McKay Road – perched culvert.



Photo 51 Station 10-27 – Unnamed water body – Facing upstream (south) showing flowing water body.



Photo 52 Station 10-27 – Unnamed water body – Showing dominant cobble, gravel and sand substrate.



Photo 53 Station 10-29 – Unnamed water body – Facing upstream (west) showing water body channel.



Photo 54 Station 10-29 – Unnamed water body – Facing downstream (east) showing water body channel.



Photo 55 Station 10-29 – Unnamed water body – Showing dominant gravel, cobble and sand substrate.



Photo 56 Station 10-28 – Unnamed water body – Facing upstream (south) showing water body flowing over steep bedrock.



Photo 57 Station 10-28 – Unnamed water body – Facing downstream (north) showing narrow, shallow water bodies (10-27 left, 10-28 right).



Photo 58 Station 10-28 – Unnamed water body – Downstream section where water body permeates into ground. Showing dominant cobble, sand and detritus substrate.



Photo 59 Station 10-25 – Unnamed water body – Facing upstream (southeast) showing flowing water body.



Photo 60 Station 10-25 – Unnamed water body – Facing downstream (northwest) showing water body with dominant cobble, gravel and sand substrate.



Photo 61 Station 10-25 – Unnamed water body – Culverts and pool – location of fish community assessment.



Photo 62 Station 10-26 – Unnamed water body – Facing upstream (south) showing dry water body channel.



Photo 63 Station 10-26 – Unnamed water body – Facing downstream (north) showing dry water body channel.



Photo 64 Station 10-26 – Unnamed water body – Showing dominant sand, cobble and gravel substrate.



Photo 65 Station 10-26 – Unnamed water body – Confluence of stations 10-26 and 10-25.



Photo 66 Station 10-13 – Unnamed water body – Sections of dry channel common.



Photo 67 Station 10-13 – Unnamed water body – Facing upstream (southwest) showing water body with wide bankfull width.



Photo 68 Station 10-13 – Unnamed water body – Facing downstream (northeast) showing water body with sections of dry channel bed.



Photo 69 Station 10-16 – Unnamed water body – Facing upstream (south) showing water body channel.



Photo 70 Station 10-16 – Unnamed water body – Facing downstream (north) showing water body channel.



Photo 71 Station 10-16 – Unnamed water body – Showing dominant detritus substrate.



Photo 72 Station 10-17 – Unnamed water body – Facing upstream (southeast) showing low gradient water body with low flow.



Photo 73 Station 10-17 – Unnamed water body – Facing downstream (northwest) showing water body channel with abundant organic debris.



Photo 74 Station 10-17 – Unnamed water body – Seepage area and origins of water body.



Photo 75 Station 10-18 – Unnamed water body – Facing upstream (southeast) showing high gradient water body.

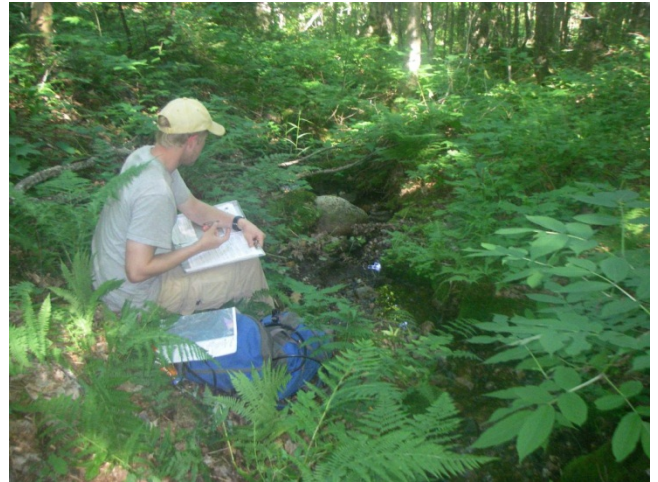


Photo 76 Station 10-18 – Unnamed water body – Facing downstream (northwest) showing high gradient water body.



Photo 77 Station 10-18 – Unnamed water body – Showing dominant gravel, cobble and sand substrate.



Photo 78 Station 10-19 – Unnamed water body – Facing upstream (southeast) showing permanent, high gradient water body.



Photo 79 Station 10-19 – Unnamed water body – Facing downstream (northwest) showing permanent, high gradient water body.



Photo 80 Station 10-19 – Unnamed water body – Groundwater seepage area and origin of 10-19 water body.



Photo 81 Station 10-19 – Showing dominant boulder, cobble and sand substrate.



Photo 82 Station 10-20 – Unnamed water body – Facing upstream (southeast) showing water body channel.



Photo 83 Station 10-20 – Unnamed water body – Facing downstream (northwest) showing water body channel.



Photo 84 Station 10-20 – Unnamed water body – Showing dominant cobble, detritus and gravel substrate.



Photo 85 Station 10-8 – Facing (south) showing water body overview.



Photo 86 Station 10-8 – Facing (east) showing water body shoreline.



Photo 87 Station 10-12 – Unnamed water body – Facing downstream (south) showing water body channel.



Photo 88 Station 10-12 – Unnamed water body – Showing dominant cobble, sand and detritus substrate.



Photo 89 Station 10-12 – Unnamed water body – Facing upstream (north) showing flowing water body.



Photo 90 Station 10-11 – Unnamed water body – Showing dominant gravel, cobble and sand substrate.

Filepath: w:\active\60960735\reports\water assessment and water body\appendices\app_c-photographic record\agawa watershed oct 5 2012 ke.docx



Photo 91 Station 10-11 – Unnamed water body – Facing upstream (northwest) showing high gradient water body.



Photo 92 Station 10-11 – Unnamed water body – Facing downstream (southeast) showing water body channel.



Photo 93 Station 10-10 – Unnamed water body – Facing upstream (west) showing water body channel and banks.

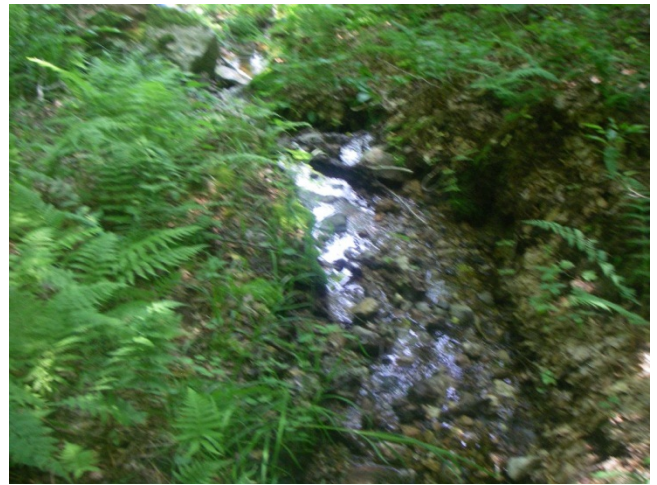


Photo 94 Station 10-10 – Unnamed water body – Facing downstream (east) showing water body channel.



Photo 95 Station 10-10 – Unnamed water body – Showing dominant gravel, sand and cobble substrate.



Photo 96 Station 10-33 – Unnamed water body – Facing upstream showing channel and substrates.

Client/Project
Nodin Kitagan Limited Partnership
And Nodin Kitagan 2 Limited Partnership

September 2012
160960771

Bow Lake Wind Project

Appendix
C – Agawa Watershed

Page
16 of 31

Title
PHOTOGRAPHIC RECORD



Photo 97 Station 10-33 – Unnamed water body – Facing downstream showing channel overview.



Photo 98 Station 10-6 – Unnamed water body – Showing dominant gravel, cobble and detritus substrate.



Photo 99 Station 10-6 – Unnamed water body – Facing upstream (southwest) showing high gradient water body with abundant herbaceous vegetation along channel edge.

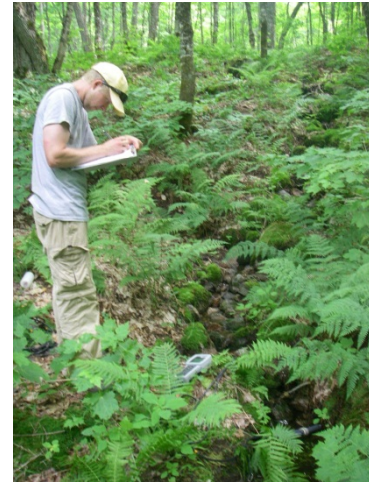


Photo 100 Station 10-5 – Unnamed water body – Stantec employee recording water quality analysis.



Photo 101 Station 10-5 – Unnamed water body – Facing downstream (northeast) showing high gradient water body.



Photo 102 Station 10-5 – Unnamed water body – Facing upstream (southwest) showing high gradient water body.

Client/Project
Nodin Kitagan Limited Partnership
And Nodin Kitagan 2 Limited Partnership

September 2012
160960771

Bow Lake Wind Project

Appendix
C – Agawa Watershed

Page
17 of 31

Title
PHOTOGRAPHIC RECORD



Photo 103 Station 10-7 – Unnamed water body – Facing upstream (southwest) showing narrow water body channel.



Photo 104 Station 10-7 – Unnamed water body – Facing downstream (northeast) showing narrow water body channel.



Photo 105 Station 10-7 – Unnamed water body – Showing dominant detritus, sand and gravel substrate.

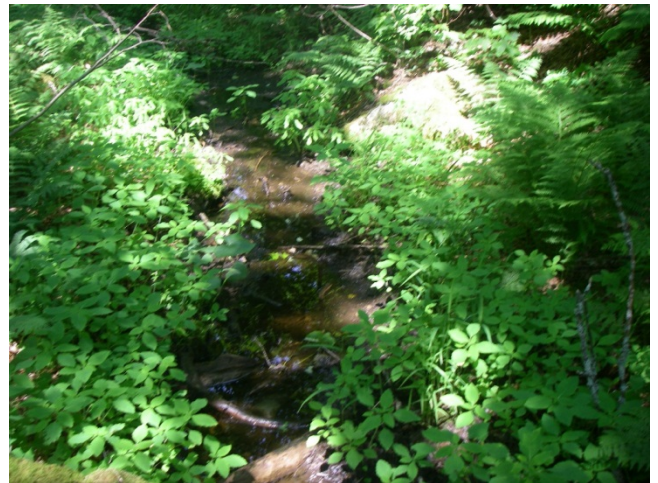


Photo 106 Station 10-3 – Unnamed water body – Facing downstream (northwest) showing water body channel.



Photo 107 Station 10-3 – Unnamed water body – Showing dominant detritus substrate.



Photo 108 Station 10-3 – Unnamed water body – Facing upstream (southeast) showing shallow water body channel with abundant aquatic vegetation along banks.

Client/Project
Nodin Kitagan Limited Partnership
And Nodin Kitagan 2 Limited Partnership

September 2012
160960771

Bow Lake Wind Project

Appendix
C – Agawa Watershed

Page
18 of 31

Title
PHOTOGRAPHIC RECORD



Photo 109 Station 10-34 – Unnamed water body – Facing upstream showing channel overview.



Photo 110 Station 10-34 – Unnamed water body – Facing downstream showing channel and steep gradient.



Photo 111 Station 7-20 – Isolated Seep #2 – Close-up of seep.



Photo 112 Station 7-20 – Isolated Seep #2 – Overview showing lack of channel definition.



Photo 113 Station 7-19 – Isolated Seep #1 – Close-up of seep.

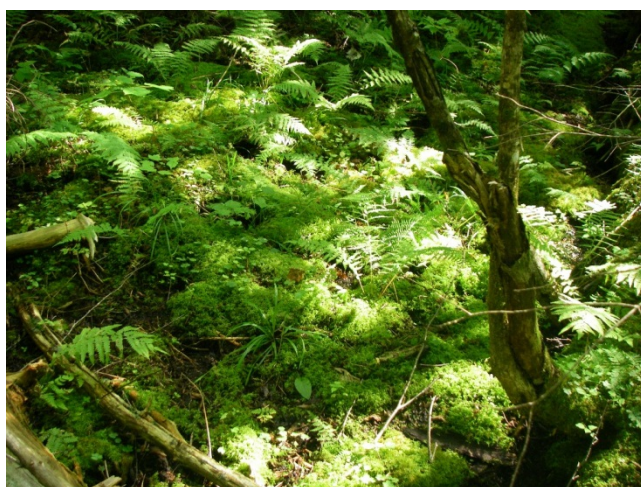


Photo 114 Station 7-19 – Isolated Seep #1 – Overview showing lack of channel definition.



Photo 115 Station 7-17 – Unnamed water body – Facing upstream (south) showing water body channel. Upstream of 10-25.



Photo 116 Station 7-17 – Unnamed water body – Facing downstream (north) showing water body channel. Upstream of 10-25.



Photo 117 Station 7-16 – Unnamed water body – Facing upstream (south) showing pool within water body channel.



Photo 118 Station 7-16 – Unnamed water body – Facing downstream (north) showing diffuse water body channel in mossy rocks.



Photo 119 Station 7-16 – Unnamed water body – Showing dominant sand, silt and detritus substrate.



Photo 120 Station 7-15 – Unnamed water body – Facing upstream (northwest) showing water body channel.

Client/Project
Nodin Kitagan Limited Partnership
And Nodin Kitagan 2 Limited Partnership

September 2012
160960771

Bow Lake Wind Project

Appendix
C – Agawa Watershed

Page
20 of 31

Title
PHOTOGRAPHIC RECORD



Photo 121 Station 7-15 – Unnamed water body – Showing dominant sand, silt and detritus substrate.



Photo 122 Station 7-15 – Unnamed water body – Facing downstream (northwest) near loss of channel.



Photo 123 Station 7-14 – Unnamed water body – Seep origins of water body. Dominant Spotted Touch-me-not (*Impatiens capensis*).



Photo 124 Station 7-14 – Unnamed water body – Facing upstream (south) showing water body channel near seep.



Photo 125 Station 7-14 – Unnamed water body – Showing dominant sand, silt and detritus substrate.



Photo 126 Station 7-13 – Unnamed water body – Facing upstream (southeast) showing flowing water body channel.

Filepath: w:\active\60960735\reports\water assessment and water body\appendices\app_c-photographic record\agawa watershed oct 5 2012 ke.docx



Photo 127 Station 7-13 – Unnamed water body – Facing downstream (northwest) showing water body channel and pool.



Photo 128 Station 7-13 – Unnamed water body – Showing dominant sand, silt and detritus substrate.



Photo 129 Station 7-12 – Unnamed water body – Facing upstream (southeast) showing water body channel.



Photo 130 Station 7-12 – Unnamed water body –Facing downstream (northwest) showing flowing water body channel.



Photo 131 Station 7-12 – Unnamed water body – Facing downstream (northwest) showing spring fed water body channel origins.



Photo 132 Station 7-12 – Unnamed water body – Showing dominant sand, silt and detritus substrate.



Photo 133 Station 7-12 – Unnamed water body – Water body channel diffuse, loss of channel definition.



Photo 134 Station 7-11 – Unnamed water body – Facing upstream (south) showing water body channel.



Photo 135 Station 7-11 – Unnamed water body – Facing downstream (north) showing flowing water body channel.



Photo 136 Station 7-11 – Unnamed water body – Showing dominant cobble, silt, sand and detritus substrate.



Photo 137 Station 7-10 – Unnamed water body – Facing upstream (south) showing water body channel.



Photo 138 Station 7-10 – Unnamed water body – Facing downstream (north) showing water body channel.

Client/Project
Nodin Kitagan Limited Partnership
And Nodin Kitagan 2 Limited Partnership

September 2012
160960771

Bow Lake Wind Project

Appendix
C – Agawa Watershed

Page
23 of 31

Title
PHOTOGRAPHIC RECORD



Photo 139 Station 7-10 – Unnamed water body – Showing dominant sand, silt and detritus substrate.



Photo 140 Station 7-9 – Unnamed water body – Facing upstream (south) showing dry water body channel and banks.



Photo 141 Station 7-9 – Unnamed water body – Pools within water body channel, downstream end.



Photo 142 Station 7-9 – Unnamed water body – Showing dominant cobble, gravel, silt and detritus substrate.



Photo 143 Station 7-18 – Unnamed water body – Facing upstream (south) near seep origin.



Photo 144 Station 7-18 – Unnamed water body – Facing downstream (north) showing water body channel.

Client/Project
Nodin Kitagan Limited Partnership
And Nodin Kitagan 2 Limited Partnership

September 2012
160960771

Bow Lake Wind Project

Appendix
C – Agawa Watershed

Page
24 of 31

Title
PHOTOGRAPHIC RECORD



Photo 145 Station 7-18 – Unnamed water body – Showing dominant sand, silt and detritus substrate.



Photo 146 Station 7-5 – Unnamed water body – Facing upstream (southeast) showing water body channel.



Photo 147 Station 7-5 – Unnamed water body – Facing downstream (northwest) showing water body meander and undercut banks.



Photo 148 Station 7-5 – Unnamed water body – Showing dominant gravel, sand and cobble substrate.



Photo 149 Station 7-8 – Unnamed water body – Facing upstream (northeast) showing dry water body channel and banks.



Photo 150 Station 7-8 – Unnamed water body – Facing downstream (southwest) showing dry water body channel.

Client/Project
Nodin Kitagan Limited Partnership
And Nodin Kitagan 2 Limited Partnership

September 2012
160960771

Bow Lake Wind Project

Appendix
C – Agawa Watershed

Page
25 of 31

Title
PHOTOGRAPHIC RECORD



Photo 151 Station 7-8 – Unnamed water body – Showing dominant detritus, sand and silt substrate.



Photo 152 Station 7-1 – Unnamed water body – Facing upstream (southwest) showing intermittent water body channel.



Photo 153 Station 7-1 – Unnamed water body – Facing downstream (northeast) showing water body channel.



Photo 154 Station 7-1 – Unnamed water body – Showing dominant boulder, cobble and gravel substrate.



Photo 155 Station 1-1 – Unnamed water body – Facing west across lake.



Photo 156 Station 1-1 – Unnamed water body – Facing east across lake.

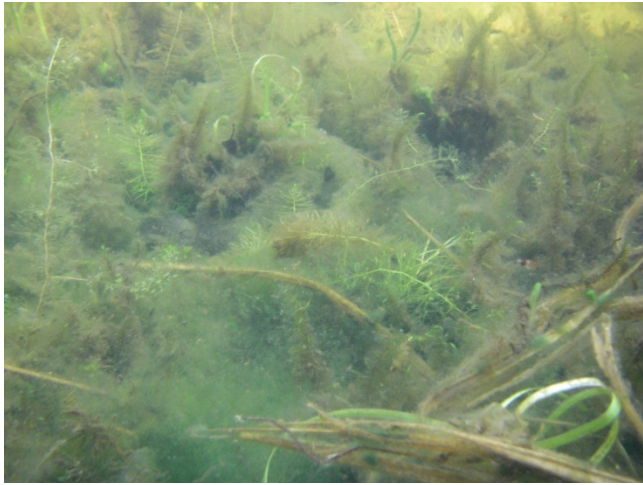


Photo 157 Station 1-1 – Unnamed water body – Showing aquatic vegetation with dominant detritus, silt and muck substrate.



Photo 158 Station 1-5 – Unnamed water body – Facing upstream (southeast) showing high gradient water body.



Photo 159 Station 1-5 – Unnamed water body – Facing downstream (northwest) showing water body channel and substrate.

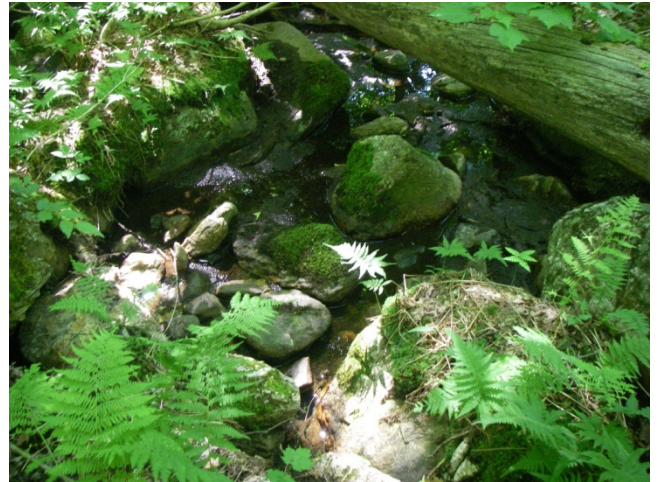


Photo 160 Station 1-12 – Unnamed water body – Facing downstream (northwest) showing water body channel.



Photo 161 Station 1-12 – Unnamed water body – Showing dominant cobble and boulder substrate.



Photo 162 Station 1-14 – Unnamed water body – Facing upstream (east) showing water body channel with flowing water.

Client/Project
Nodin Kitagan Limited Partnership
And Nodin Kitagan 2 Limited Partnership

September 2012
160960771

Bow Lake Wind Project

Appendix
C – Agawa Watershed

Page
27 of 31

Title
PHOTOGRAPHIC RECORD



Photo 163 Station 1-14 – Unnamed water body – Facing downstream (west) showing water body channel.



Photo 164 Station 1-14 – Unnamed water body – Showing dominant cobble, boulder and detritus substrate.



Photo 165 Station 1-10 – Unnamed water body – Facing upstream (northeast) showing shallow, dry, water body channel.



Photo 166 Station 1-10 – Unnamed water body – Facing downstream (southwest) showing water body channel.



Photo 167 Station 1-10 – Unnamed water body – Showing dominant clay, silt and muck substrate.



Photo 168 Station 1-11 – Unnamed water body – Facing southeast showing water body overview.



Photo 169 Station 1-11 – Unnamed water body – Facing north showing water body shoreline and beaver dam.



Photo 170 Station 1-11 – Unnamed water body – Facing upstream (southeast) showing water body channel.



Photo 171 Station 2-4 – Unnamed water body – Facing north.



Photo 172 Station 2-4 – Unnamed water body – Facing (east) showing water body with woody debris along shoreline.



Photo 173 Station 2-4 – Unnamed water body – Showing aquatic vegetation growing in dominant detritus, muck and boulder substrate



Photo 174 Station 3-4 – Unnamed water body – Facing upstream (west) showing water body channel and pool area.



Photo 175 Station 3-4 – Unnamed water body – Facing downstream (east) showing dry water body channel.



Photo 176 Station 3-4 – Unnamed water body – Mosquito larvae (*Anopheles* sp.) found in water body pool.



Photo 177 Station 3-4 – Unnamed water body – Showing dominant detritus, muck, and gravel and boulder substrate.



Photo 178 Station 3-5 – Unnamed water body– Facing upstream (southeast) showing water body with low flow.



Photo 179 Station 3-5 – Unnamed water body – Facing downstream (northwest) showing water body channel and pools.



Photo 180 Station 3-5 – Unnamed water body – Showing dominant detritus, muck and cobble substrate.

Client/Project
Nodin Kitagan Limited Partnership
And Nodin Kitagan 2 Limited Partnership

September 2012
160960771

Bow Lake Wind Project

Appendix
C – Agawa Watershed

Page
30 of 31

Title
PHOTOGRAPHIC RECORD



Photo 181 Station 3-1 – Unnamed water body – Facing upstream (east) showing water body channel with high banks.



Photo 182 Station 3-1 – Unnamed water body – Facing downstream (west) showing water body channel.



Photo 183 Station 3-1 – Unnamed water body – Showing dominant boulder, gravel and detritus substrate.

Client/Project
Nodin Kitagan Limited Partnership
And Nodin Kitagan 2 Limited Partnership

September 2012
160960771

Bow Lake Wind Project

Appendix
C – Agawa Watershed

Page
31 of 31

Title
PHOTOGRAPHIC RECORD



Photo 1 Station 9C-2 – Unnamed water body – Facing northeast along shoreline.



Photo 2 Station 9C-2 – Unnamed water body – Facing west along shoreline.



Photo 3 Station 9C-2 – Unnamed water body – Facing north across lake..



Photo 4 Station 9C-2 – Unnamed water body – Close-up of substrates.



Photo 5 Station 9C-3 – Unnamed water body – Close-up of outlet from water body into lake at Station 9C-2.



Photo 6 Station 9C-3 – Unnamed water body – Close-up of dry channel and culvert for access road.



Photo 7 Station 10-2 – Unnamed water body – Facing upstream (northwest) showing lowland and water body channel origins.



Photo 8 Station 10-2 – Unnamed water body – Facing downstream (southeast) showing water body channel origins.



Photo 9 Station 10-2 – Unnamed water body – Showing dominant sand, detritus and cobble substrate.



Photo 10 Station 10-1 – Unnamed water body – Facing downstream (north) showing high gradient water body, west of established access road.



Photo 11 Station 10-1 – Unnamed water body – Showing dominant gravel, cobble and sand substrate.



Photo 12 Station 10-1 – Unnamed water body – Facing downstream (southeast) showing pooling area, east of access road – abundant woody debris.



Photo 13 Station 10-21 – Unnamed water body – Facing upstream (northwest) showing water body channel.



Photo 14 Station 10-21 – Unnamed water body – Facing downstream (southeast) showing dry water body channel.



Photo 15 Station 10-21 – Showing dominant cobble, boulder and gravel substrate.



Photo 16 Station 10-21 – Unnamed water body – Mayfly larvae (Baetidae) found in pool.



Photo 17 Station 11-4 – Unnamed water body – Facing upstream (north) showing water body in meadow habitat.



Photo 18 Station 11-4 – Unnamed water body – Facing downstream (east) showing water body channel.



Photo 19 Station 11-4 – Unnamed water body – Showing dominant cobble, sand and silt substrate.



Photo 20 Station 11-4 – Unnamed water body – Facing (east) showing seep water body – contributes to flows of 11-4.



Photo 21 Station 11-4 – Unnamed water body – Facing upstream (northwest) showing water body falls – downstream of initial assessment.



Photo 22 Station 12-1 – Unnamed water body – Facing upstream (southwest) showing water body channel and pool.

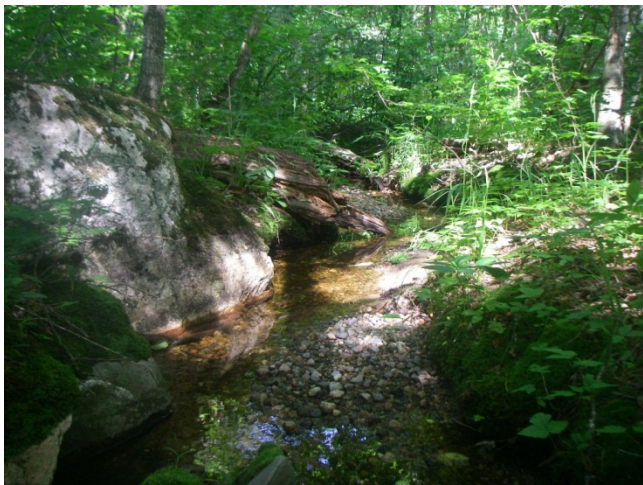


Photo 23 Station 12-1 – Unnamed water body – Facing downstream (northeast) showing water body channel.



Photo 24 Station 12-1 – Unnamed water body – Showing dominant gravel, sand and silt substrate.



Photo 25 Station 12-1 – Unnamed water body – Facing downstream (northeast) – Surface water permeates underground through porous substrates.



Photo 26 Station 12-1 – Unnamed water body – Facing downstream (northeast) showing water body channel after confluence of 10-21 and 12-1.



Photo 27 Station 11-3 – Unnamed water body – Facing upstream (west) showing water body.



Photo 28 Station 11-3 – Unnamed water body – Facing downstream (east) showing water body.



Photo 29 Station 11-3 – Unnamed water body – Showing dominant boulder, cobble and gravel substrate.



Photo 30 Station 11-1 – Unnamed water body – Facing upstream (northeast) showing water body channel with pockets of standing water.



Photo 31 Station 11-1 – Unnamed water body – Facing downstream (southwest) showing water body channel.



Photo 32 Station 11-1 – Unnamed water body – Showing dominant cobble, muck and detritus substrate.



Photo 33 Station 11-2 – Unnamed water body – Facing upstream (northwest) showing water body channel.



Photo 34 Station 11-2 – Unnamed water body – Facing downstream (southeast) showing water body channel.



Photo 35 Station 11-2 – Unnamed water body – Showing dominant sand, cobble and detritus substrate.

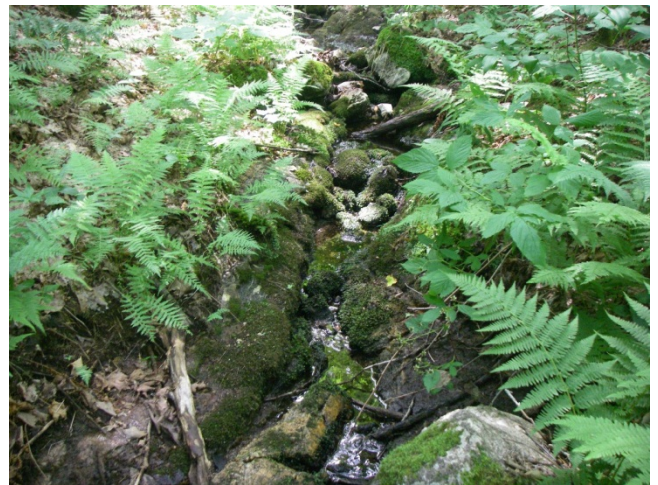


Photo 36 Station 1-3 – Unnamed water body – Facing upstream (northwest) showing narrow water body channel.



Photo 37 Station 1-3 – Unnamed water body – Facing downstream (southeast) showing water body channel with pooling water in undercut banks.



Photo 38 Station 1-3 – Unnamed water body – Showing dominant cobble and boulder substrate.



Photo 39 Station 1-4 – Unnamed water body – Facing (east) showing water body shoreline.



Photo 40 Station 1-4 – Unnamed water body – Showing location of fish community assessment.



Photo 41 Station 1-4 – Unnamed water body– Showing dominant detritus, cobble, muck and silt substrate.



Photo 42 Station 1-9 – Unnamed water body – Facing upstream (northwest) showing stepped section in water body channel.



Photo 43 Station 1-9 – Unnamed water body– Facing downstream (southeast) showing undercut bank and pooling water.



Photo 44 Station 1-9 – Unnamed water body – Showing dominant cobble, boulder and gravel substrate.

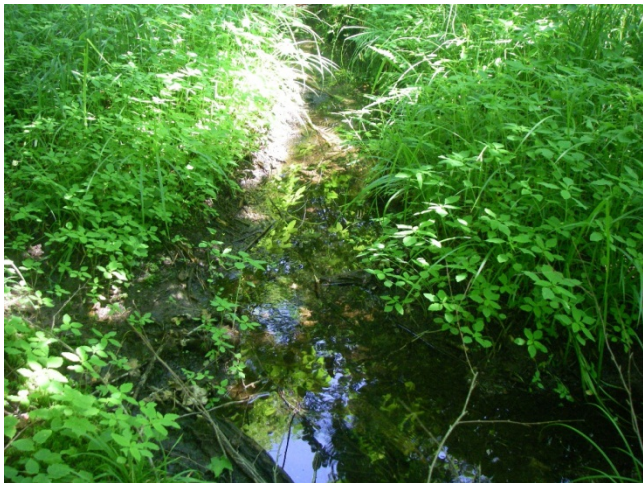


Photo 45 Station 1-8 – Unnamed water body – Facing upstream (northwest) showing water body channel.



Photo 46 Station 1-8 – Unnamed water body – Facing downstream (southeast) showing flowing water body.

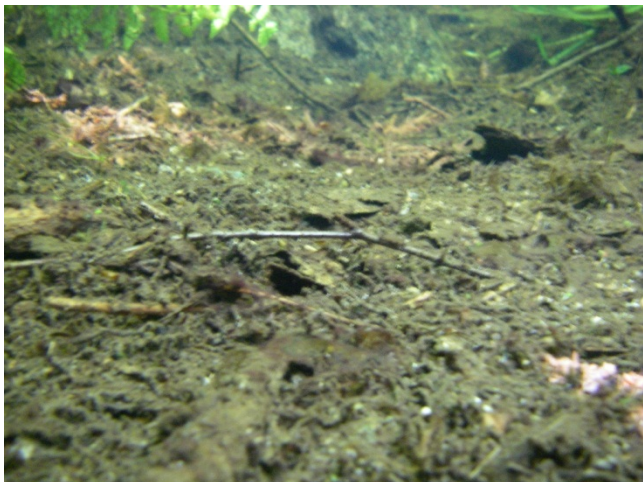


Photo 47 Station 1-8 – Unnamed water body – Showing dominant detritus, gravel and cobble substrate.



Photo 48 Station 1-7 – Unnamed water body – Facing upstream (northwest) showing dry water body channel.



Photo 49 Station 1-7 – Unnamed water body – Facing downstream (southeast) showing water body channel.



Photo 50 Station 1-7 – Unnamed water body – Showing dominant boulder, cobble and sand substrate.



Photo 51 Station 1-6 – Unnamed water body – Facing upstream (northwest) showing water body channel.



Photo 52 Station 1-6 – Unnamed water body – Facing downstream (southeast) showing water body channel.



Photo 53 Station 1-6 – Unnamed water body – Showing dominant boulder, cobble and gravel substrate.



Photo 54 Station 2-2 – Unnamed water body – Facing upstream (southeast) showing water body channel with low water levels.



Photo 55 Station 2-2 – Unnamed water body – Facing downstream (northwest) showing narrow water body channel.



Photo 56 Station 3-3 – Unnamed pool water body – Facing upstream (northeast) showing water body pool and meander.



Photo 57 Station 3-3 – Unnamed water body – Facing downstream (southwest) showing slow flowing water body.



Photo 58 Station 3-3 – Unnamed water body – Showing dominant detritus, muck and sand substrate.



Photo 59 Station 3-6 – Unnamed water body – Facing upstream (southeast) showing perched section in water body.



Photo 60 Station 3-6 – Unnamed water body – Facing downstream (northwest) showing meandering water body channel with dry cobble bars.



Photo 61 Station 3-6 – Unnamed water body – Showing dominant gravel, sand and cobble substrate.



Photo 62 Station 3-5 – Unnamed water body– Facing upstream (southeast) showing water body with low flow.



Photo 63 Station 3-5 – Unnamed water body – Facing downstream (northwest) showing water body channel and pools.



Photo 64 Station 3-5 – Unnamed water body – Showing dominant detritus, muck and cobble substrate.



Photo 65 Station 3-8 – Unnamed water body – Facing upstream (southeast) showing water body channel.



Photo 66 Station 3-8 – Unnamed water body – Facing downstream (northwest) showing water body channel.



Photo 67 Station 3-8 – Unnamed water body – Showing dominant sand, gravel and cobble substrate.



Photo 68 Station 4-1 – Unnamed water body – Facing upstream (east) showing water body channel.



Photo 69 Station 4-1 – Unnamed water body – Facing downstream (west) showing water body channel.



Photo 70 Station 4-1 – Unnamed water body – Showing dominant cobble, boulder and sand substrate.



Photo 71 Station 4-2 – Unnamed water body – Facing upstream (southeast) showing water body channel.



Photo 72 Station 4-2 – Unnamed water body – Facing downstream (northwest) show water body channel and surface water.



Photo 73 Station 4-2 – Unnamed water body – Showing dominant cobble, gravel and sand substrate.



Photo 74 Station 4-4 – Unnamed water body – Facing upstream (south) showing dry, intermittent water body channel.



Photo 75 Station 4-4 – Unnamed water body – Facing downstream (north) showing intermittent water body channel.



Photo 76 Station 4-4 – Unnamed water body – Showing dominant sand and gravel substrate.



Photo 77 Station 4-5 – Unnamed water body – Facing upstream (southeast) showing intermittent water body channel.



Photo 78 Station 4-5 – Unnamed water body – Facing downstream (northwest) showing intermittent water body channel.



Photo 79 Station 4-5 – Unnamed water body – Showing dominant gravel, sand and detritus substrate.



Photo 80 Station 0-9 – Unnamed water body – Facing upstream (northeast) showing a permanent water body.



Photo 81 Station 0-9 – Unnamed water body – Facing downstream (southwest) showing water body channel.



Photo 82 Station 0-9 – Unnamed water body – Showing dominant cobble, gravel and sand substrate.



Photo 83 Station 0-7 – Unnamed water body – Facing upstream (northeast) showing ponded area – barrier between upstream and downstream sections.



Photo 84 Station 0-7 – Unnamed water body – Facing downstream (southwest) showing shallow surface water.



Photo 85 Station 0-7 – Unnamed water body – Showing dominant muck, detritus and silt substrate.



Photo 86 Station 0-4 – Unnamed water body – Facing upstream (east) showing water body channel.



Photo 87 Station 0-4 – Unnamed water body – Facing downstream (west) showing dry section of water body channel.



Photo 88 Station 0-4 – Unnamed water body – Showing dominant sand, boulder, cobble and detritus substrate.



Photo 89 Station 0-10 – Negick Lake –Facing (east) from beaver dam.



Photo 90 Station 0-10 – Bow Lake – Facing (west) from beaver dam.



Photo 91 Station 0-10 – Bow Lake – Location of fish community assessment. Aquatic vegetation and beaver dam debris provides habitat for many aquatic species.



Photo 92 Station 0-10 – Bow Lake – Showing beaver dam debris and White Water Lily (*Nymphaea odorata*) with dominant sand and gravel substrate on lake bed.



Photo 93 Station 0-11 – Unnamed water body – Facing upstream (south) showing channel with abundant sedge (Cyperaceae).



Photo 94 Station 0-11 – Unnamed water body – Facing downstream (north) showing pool and minnow traps.



Photo 95 Station 0-11 – Unnamed water body – Showing submersed pondweed (*Potamogeton* spp.) with dominant muck, detritus and sand substrate.



Photo 96 Station 0-12 – Unnamed water body – Facing upstream (south) showing dry water body channel.



Photo 97 Station 0-12 – Unnamed water body – Facing downstream (north) showing dry water body channel.



Photo 98 Station 0-12 – Unnamed water body – Showing dominant detritus, boulder cobble and gravel substrate.



Photo 99 Station 0-13 – Unnamed water body – Facing upstream (south) showing water body.



Photo 100 Station 0-13 – Unnamed water body – Facing downstream (northwest) showing water body flowing beneath large boulders in channel.



Photo 101 Station 0-13 – Unnamed water body – Showing dominant boulder, gravel and cobble substrate.



Photo 102 Station 5-2 – Unnamed water body – Facing upstream (southwest) showing intermittent water body channel.



Photo 103 Station 5-2 – Unnamed water body – Facing downstream (northeast) showing intermittent water body – culvert under forestry access road.



Photo 104 Station 5-2 – Unnamed water body – Downstream ponded area northeast of current road.



Photo 105 Station 5-2 – Unnamed water body – Showing dominant gravel, sand and detritus substrate.



Photo 106 Station 5-3 – Unnamed water body – Facing upstream (southeast) showing permanent water body with abundant woody debris in channel.



Photo 107 Station 5-3 – Unnamed water body – Facing downstream (northwest) showing permanent water body.



Photo 108 Station 5-3 – Unnamed water body – Showing dominant gravel, sand and detritus substrate.



Photo 109 Station 6-1 – Unnamed water body – Facing upstream (northeast) showing water body channel and pooling water.



Photo 110 Station 6-1 – Unnamed water body – Facing downstream (southwest) showing dry water body channel and steep slope.



Photo 111 Station 6-1 – Unnamed water body – Showing dominant boulder, cobble and gravel substrate.



Photo 112 Station 9F-10 – Unnamed water body – Facing west across lake.



Photo 113 Station 9F-10 – Unnamed water body – Facing north across lake.



Photo 114 Station 9F-10 – Unnamed water body Close-up of substrates.



Photo 115 Station 9F-9 – West aspect of dry channel at mouth of 9F-8.



Photo 116 Station 9F-9 – Overview of dry channel in forested area.



Photo 117 Station 9F-9 – Facing west across online pond.



Photo 118 Station 9F-9 – Close-up of substrates in pond.



Photo 119 Station 9F-8 – Facing west along shoreline.



Photo 120 Station 9F-8 – Facing east along shoreline.



Photo 121 Station 9F-8 – Facing southwest across lake.



Photo 122 Station 9F-8 – Close-up of substrates.



Photo 123 Station 9F-1 – Unnamed water body – Facing upstream (northeast) showing water body and natural barriers.



Photo 124 Station 9F-1 – Unnamed water body – Facing upstream (northeast) showing water body channel at a lower gradient, closer to downstream lake.



Photo 125 Station 9F-1 – Unnamed water body – Facing downstream (southwest) showing water body channel and banks.



Photo 126 Station 9F-1 – Unnamed water body – Showing dominant cobble, gravel, sand and boulder substrate.



Photo 127 Station 9F-7 – Unnamed water body – Facing upstream (east) showing channel overview.



Photo 128 Station 9F-7 – Unnamed water body – Facing downstream (west) showing channel overview.



Photo 129 Station 9F-2 – Unnamed water body – Facing upstream (northeast) showing well vegetated water body channel.



Photo 130 Station 9F-2 – Unnamed water body – Facing downstream (southwest) showing healthy lotic habitat in water body channel.



Photo 131 Station 9F-2 – Unnamed water body– Showing dominant gravel, sand and detritus substrate.



Photo 132 Station 9F-6 – Unnamed water body - Facing east over lake from northwest shoreline.



Photo 133 Station 9F-6 – Unnamed water body - Facing west over lake from northwest shoreline.



Photo 134 Station 9F-6 – Unnamed water body - Facing south across lake from northwest shoreline.



Photo 135 Station 9F-3 – Unnamed water body – Facing downstream (south) showing water body channel on west side of access road.



Photo 136 Station 9F-3 – Unnamed water body– Facing downstream (south) showing water body on east side of access road. Low gradient, deep pools and connectivity to downstream lake.



Photo 137 Station 9F-3 – Unnamed water body – Facing upstream (north) showing water body on west side of access road. Pool location where YOY Brook Trout (*Salvelinus fontinalis*) were dip netted – road disconnects water body.

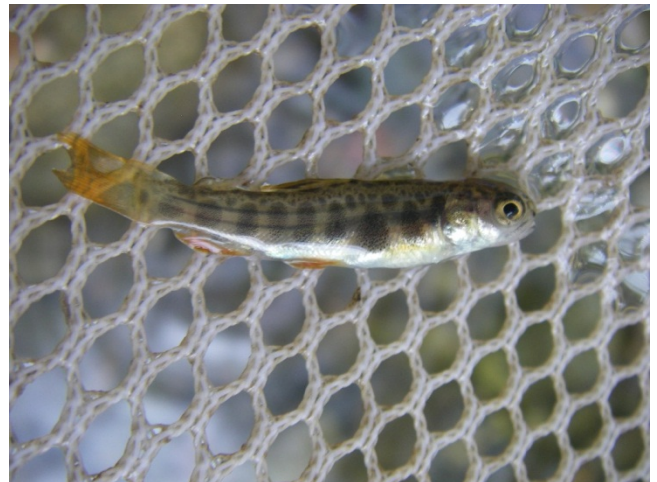


Photo 138 Station 9F-3 – Showing YOY Brook Trout that was dip netted in small pool.



Photo 139 Station 9F-3 – Showing dominant cobble, gravel and sand substrate.



Photo 140 Station 9F-4 – Unnamed water body – Facing upstream (northwest) showing dry water body channel.



Photo 141 Station 9F-4 – Unnamed water body – Facing downstream (southeast) showing water body channel and isolated pool where Brook Trout were observed.



Photo 142 Station 9F-4 – Showing dominant bedrock, cobble, gravel and sand substrate.



Photo 143 Station 9F-5 – Unnamed water body – Facing northwest across beaver pond from the south shoreline.



Photo 144 Station 9F-5 – Unnamed water body – Facing east across beaver pond.