

# **Appendix H**

## **Technical Appendices**

## **Appendix H-1**

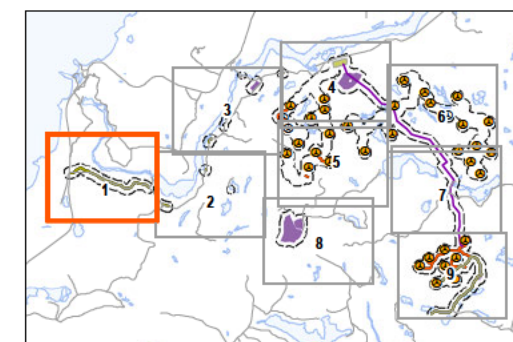
### **Wildlife Survey Locations**





## Legend

- 120m Zone of Investigation
- Project Components**
  - Turbine Location
  - Gate Location
  - Meteorological Tower
  - Proposed Water Extraction Location
  - Access Road (New)
  - Access Road (Upgrade)
  - Overhead/Underground Collector Line
  - Access Road Corridor
  - Collector Line Corridor
  - Turbine Sweep
  - Turbine Laydown
  - Construction Compound
  - Construction Compound & Welfare Building
  - Construction Compound & Transformer Station/Operations & Maintenance Building
- Existing Features**
  - Expressway / Highway
  - Road
  - Elevation Contour
  - Existing Transmission Line
  - Watercourse
  - Waterbody
  - Patent Land
- Wildlife Surveys**
  - Salamander Trapping Survey (ABH#)
  - Amphibian Egg Mass Survey (ABH#)
  - Bat Exit Survey
- Amphibian Call Counts**
  - MKI (ABH#)
  - Stantec (AS#)
  - Amphibian Call Count - 100m Radius
- Breeding Bird Surveys**
  - Point Count (PC)
  - Transect (T)
  - Breeding Bird Survey - 100m Radius
  - Breeding Bird Transect - 100m Audible/Visual Range
- Candidate Significant Wildlife Habitat**
  - Amphibian Breeding Habitat - Woodlands (ABHW)
  - Blue Wild Rye Habitat (BWRH)
  - Canada Warbler Habitat (CWH)
  - Marsh Bird Breeding Habitat (MBBH)
  - Moose Aquatic Feeding Area (MAFA)
  - Mountain Fir-moss Habitat (MFH)
  - Olive-sided Flycatcher Habitat (OFH)
  - Quill Spike-rush Habitat (QSH)
  - Snake Hibernaculum (SH)
  - Turtle Overwintering Area
  - Waterfowl Nesting Area
  - Waterfowl Stopover Area-Aquatic (WSAA)
  - Woolly Beach Heath Habitat (WBBH)
  - Woodland Pinedrops Habitat (WPH)
  - Woodland Raptor Nesting Habitat (WRNH)



## Notes

- Coordinate System: NAD 1983 UTM Zone 16N
- Base features produced under license with the Ontario Ministry of Natural Resources © Queen's Printer for Ontario, 2013.
- Orthographic imagery provided by © USGS, 2013. Imagery taken in 2008.



**Stantec**

January 2013  
160960771

Client/Project

Bow Lake Wind Farm  
Nodin Kitagan Limited Partnership and Nodin Kitagan 2  
Limited Partnership, through their General Partners  
Shongwish Nodin Kitagan GP Corp. and Shongwish  
Nodin Kitagan 2 GP Corp.

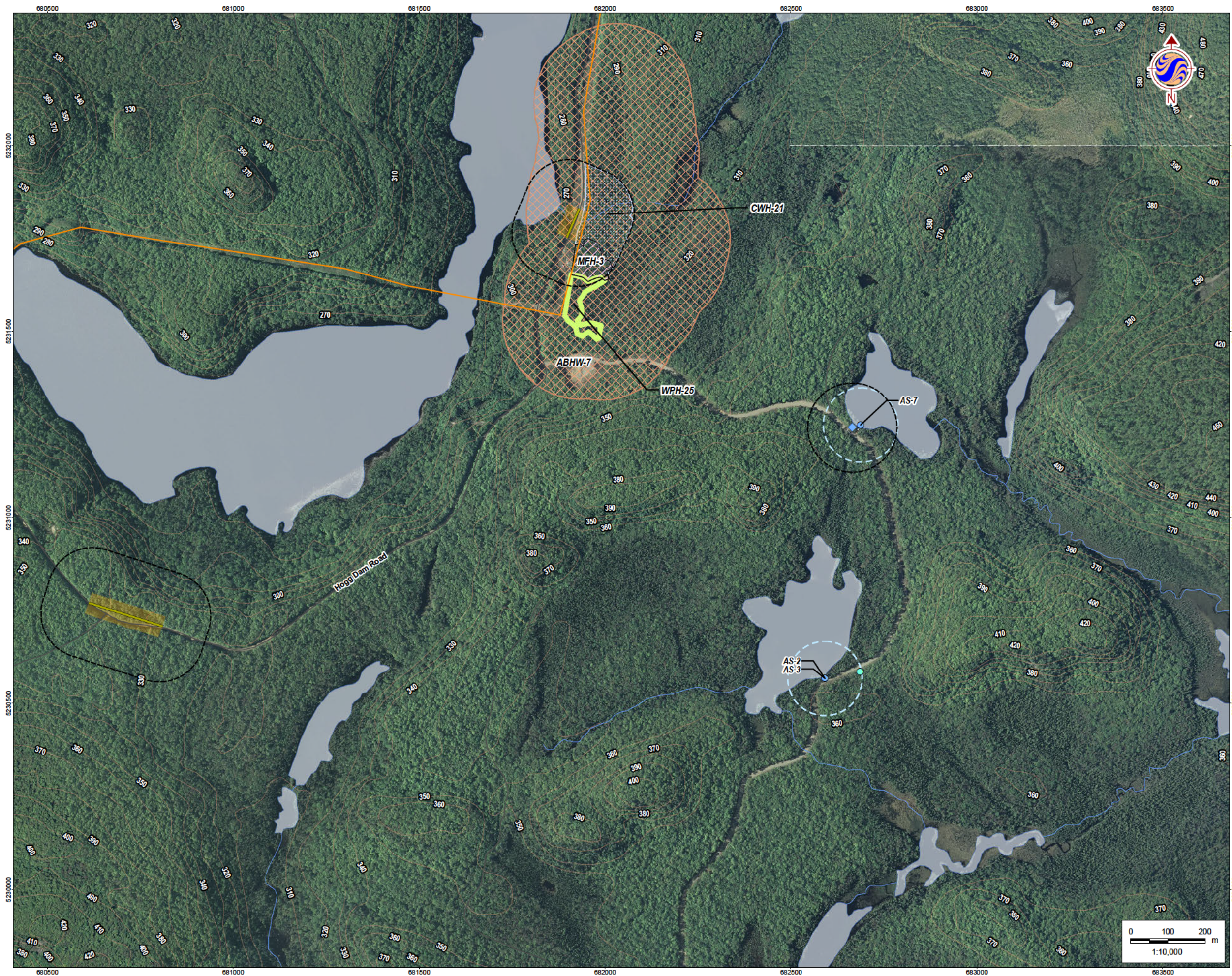
Figure No.

H-1.1

Title

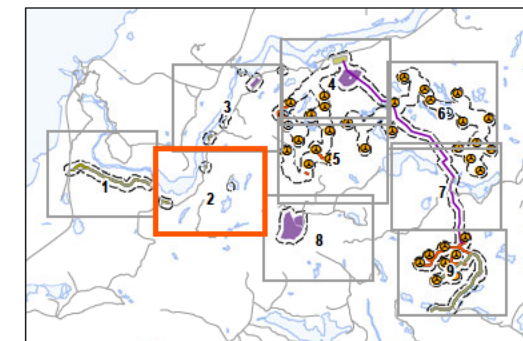
**EOS - Wildlife Survey Locations**





## Legend

- 120m Zone of Investigation**
- Project Components**
- Turbine Location
  - Gate Location
  - Meteorological Tower
  - Proposed Water Extraction Location
  - Access Road (New)
  - Access Road (Upgrade)
  - Overhead/Underground Collector Line
  - Access Road Corridor
  - Collector Line Corridor
  - Turbine Sweep
  - Turbine Laydown
  - Construction Compound
  - Construction Compound & Welfare Building
  - Construction Compound & Transformer Station/Operations & Maintenance Building
- Existing Features**
- Expressway / Highway
  - Road
  - Elevation Contour
  - Existing Transmission Line
  - Watercourse
  - Waterbody
  - Patent Land
- Wildlife Surveys**
- Salamander Trapping Survey (ABH#)
  - Amphibian Egg Mass Survey (ABH#)
  - Bat Exit Survey
- Amphibian Call Counts**
- MKI (ABH#)
  - Stantec (AS#)
  - Amphibian Call Count - 100m Radius
- Breeding Bird Surveys**
- Point Count (PC)
  - Transect (T)
  - Breeding Bird Survey - 100m Radius
  - Breeding Bird Transect - 100m Audible/Visual Range
- Candidate Significant Wildlife Habitat**
- Amphibian Breeding Habitat - Woodlands (ABHW)
  - Blue Wild Rye Habitat (BWRH)
  - Canada Warbler Habitat (CWH)
  - Marsh Bird Breeding Habitat (MBBH)
  - Moose Aquatic Feeding Area (MAFA)
  - Mountain Fir-moss Habitat (MFH)
  - Olive-sided Flycatcher Habitat (OFH)
  - Quill Spike-rush Habitat (QSH)
  - Snake Hibernaculum (SH)
  - Turtle Overwintering Area
  - Waterfowl Nesting Area
  - Waterfowl Stopover Area-Aquatic (WSAA)
  - Woolly Beach Heath Habitat (WBBH)
  - Woodland Pinedrops Habitat (WPH)
  - Woodland Raptor Nesting Habitat (WRNH)



## Notes

- Coordinate System: NAD 1983 UTM Zone 16N
- Base features produced under license with the Ontario Ministry of Natural Resources © Queen's Printer for Ontario, 2013.
- Orthographic imagery provided by © USGS, 2013. Imagery taken in 2008.



**Stantec**

January 2013  
160960771

Client/Project

Bow Lake Wind Farm  
Nodin Kitagan Limited Partnership and Nodin Kitagan 2  
Limited Partnership, through their General Partners  
Shongwish Nodin Kitagan GP Corp. and Shongwish  
Nodin Kitagan 2 GP Corp.

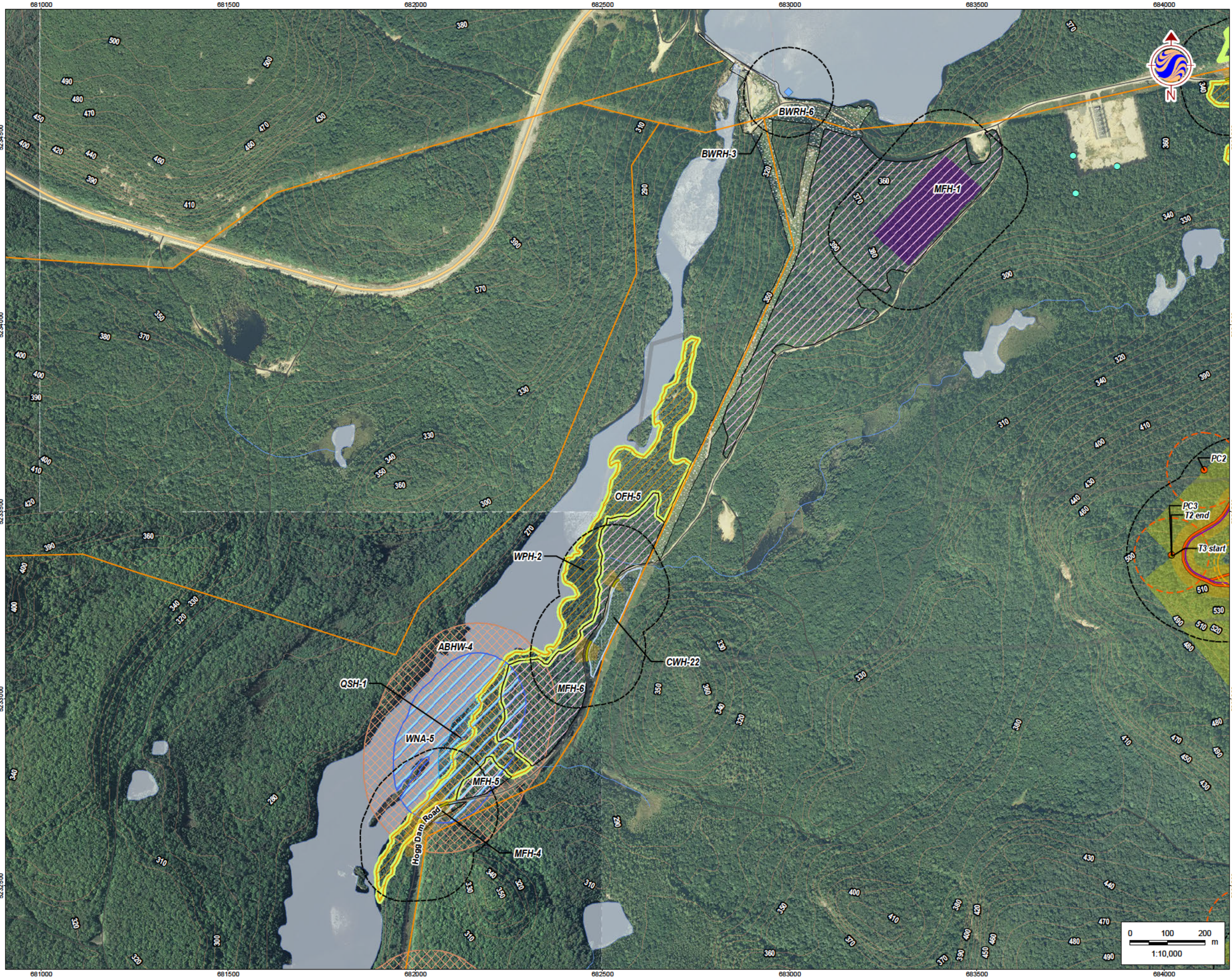
Figure No.

H-1.2

Title

**EOS - Wildlife Survey Locations**





**Legend**

- 120m Zone of Investigation**

**Project Components**

  - Turbine Location
  - Gate Location
  - Meteorological Tower
  - Proposed Water Extraction Location
  - Access Road (New)
  - Access Road (Upgrade)
  - Overhead/Underground Collector Line
  - Access Road Corridor
  - Collector Line Corridor
  - Turbine Sweep
  - Turbine Laydown
  - Construction Compound
  - Construction Compound & Welfare Building
  - Construction Compound & Transformer Station/Operations & Maintenance Building

**Existing Features**

  - Expressway / Highway
  - Road
  - Elevation Contour
  - Existing Transmission Line
  - Watercourse
  - Waterbody
  - Patent Land

**Wildlife Surveys**

  - Salamander Trapping Survey (ABH#)
  - Amphibian Egg Mass Survey (ABH#)
  - Bat Exit Survey

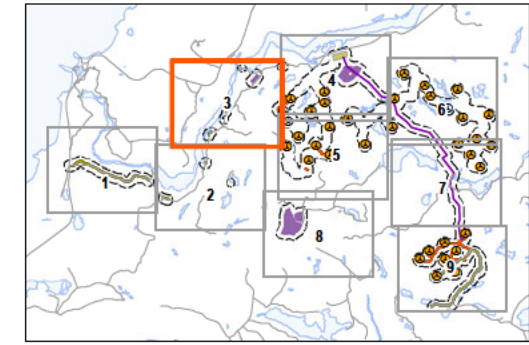
**Amphibian Call Counts**

  - MKI (ABH#)
  - Stantec (AS#)
  - Amphibian Call Count - 100m Radius
- Breeding Bird Surveys**

  - Point Count (PC)
  - Transect (T)
  - Breeding Bird Survey - 100m Radius
  - Breeding Bird Transect - 100m Audible/Visual Range

**Candidate Significant Wildlife Habitat**

  - Amphibian Breeding Habitat - Woodlands (ABHW)
  - Blue Wild Rye Habitat (BWRH)
  - Canada Warbler Habitat (CWH)
  - Marsh Bird Breeding Habitat (MBBH)
  - Moose Aquatic Feeding Area (MAFA)
  - Mountain Fir-moss Habitat (MFH)
  - Olive-sided Flycatcher Habitat (OFH)
  - Quill Spike-rush Habitat (QSH)
  - Snake Hibernaculum (SH)
  - Turtle Overwintering Area
  - Waterfowl Nesting Area
  - Waterfowl Stopover Area-Aquatic (WSAA)
  - Woolly Beach Heath Habitat (WBBH)
  - Woodland Pinedrops Habitat (WPH)
  - Woodland Raptor Nesting Habitat (WRNH)



- Notes**
- Coordinate System: NAD 1983 UTM Zone 16N
  - Base features produced under license with the Ontario Ministry of Natural Resources © Queen's Printer for Ontario, 2013.
  - Orthographic imagery provided by © USGS, 2013. Imagery taken in 2008.



**Stantec**

January 2013  
160960771

Client/Project

Bow Lake Wind Farm  
Nodin Kitagan Limited Partnership and Nodin Kitagan 2  
Limited Partnership, through their General Partners  
Shongwish Nodin Kitagan GP Corp. and Shongwish  
Nodin Kitagan 2 GP Corp.

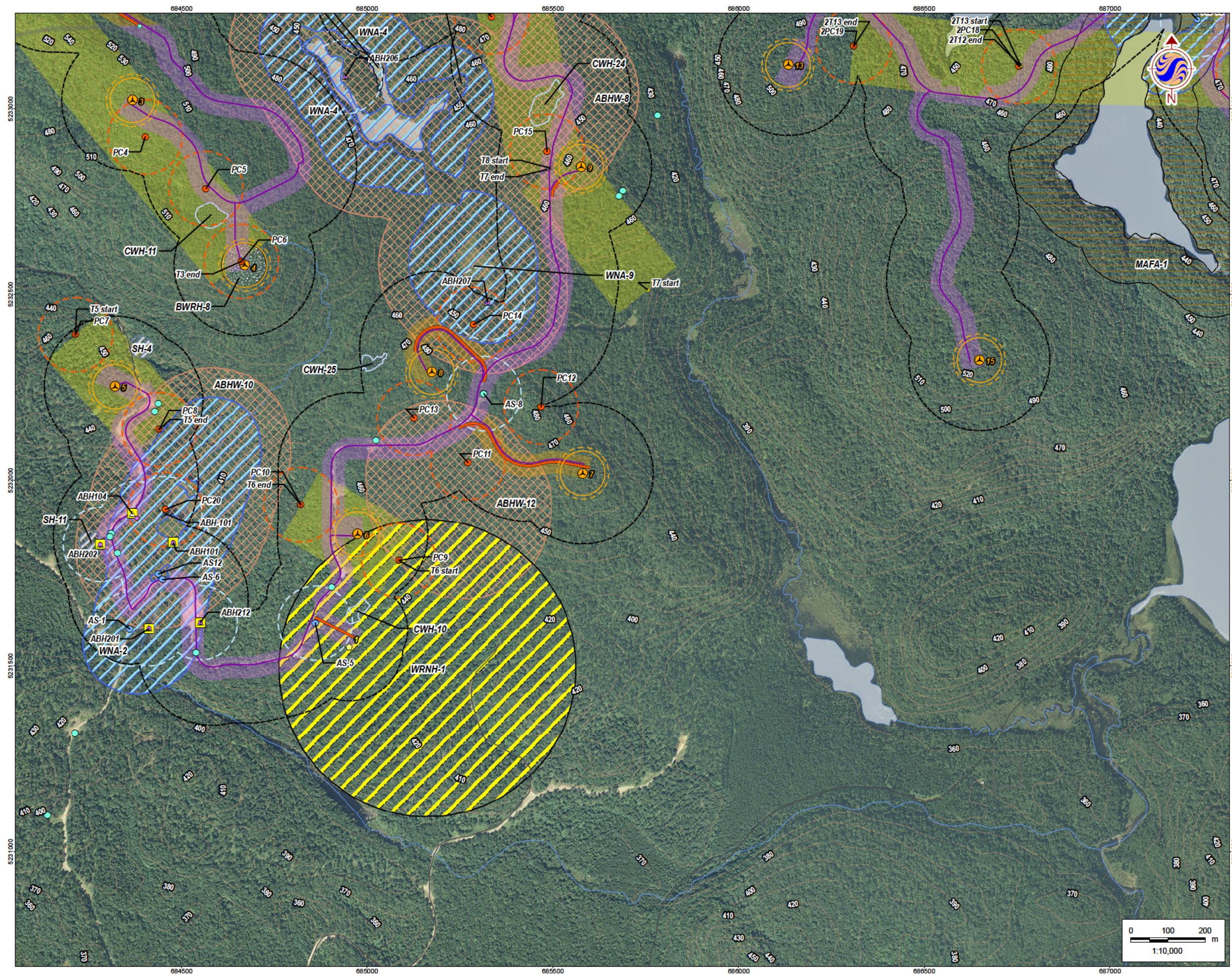
Figure No.  
**H-1.3**

Title  
**EOS - Wildlife Survey Locations**



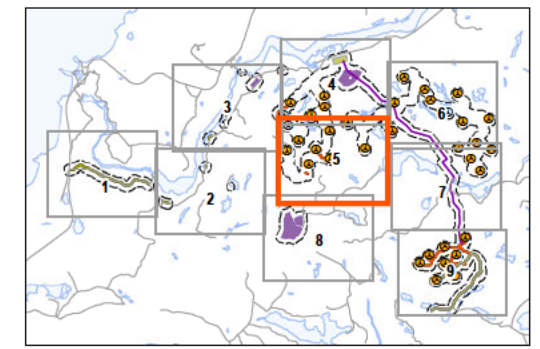






Legend

- 120m Zone of Investigation**
- Project Components**
  - Turbine Location
  - Gate Location
  - Meteorological Tower
  - Proposed Water Extraction Location
  - Access Road (New)
  - Access Road (Upgrade)
  - Overhead/Underground Collector Line
  - Access Road Corridor
  - Collector Line Corridor
  - Turbine Sweep
  - Turbine Laydown
  - Construction Compound
  - Construction Compound & Welfare Building
  - Construction Compound & Transformer Station/Operations & Maintenance Building
- Existing Features**
  - Expressway / Highway
  - Road
  - Elevation Contour
  - Existing Transmission Line
  - Watercourse
  - Waterbody
  - Patent Land
- Wildlife Surveys**
  - Salamander Trapping Survey (ABH#)
  - Amphibian Egg Mass Survey (ABH#)
  - Bat Exit Survey
- Amphibian Call Counts**
  - MKI (ABH#)
  - Stantec (AS#)
  - Amphibian Call Count - 100m Radius
- Breeding Bird Surveys**
  - Point Count (PC)
  - Transect (T)
  - Breeding Bird Survey - 100m Radius
  - Breeding Bird Transect - 100m Audible/Visual Range
- Candidate Significant Wildlife Habitat**
  - Amphibian Breeding Habitat - Woodlands (ABHW)
  - Blue Wild Rye Habitat (BWRH)
  - Canada Warbler Habitat (CWH)
  - Marsh Bird Breeding Habitat (MBBH)
  - Moose Aquatic Feeding Area (MAFA)
  - Mountain Fir-moss Habitat (MFH)
  - Olive-sided Flycatcher Habitat (OFH)
  - Quill Spike-rush Habitat (QSH)
  - Snake Hibernaculum (SH)
  - Turtle Overwintering Area
  - Waterfowl Nesting Area
  - Waterfowl Stopover Area-Aquatic (WSAA)
  - Woolly Beach Heath Habitat (WBBH)
  - Woodland Pinedrops Habitat (WPH)
  - Woodland Raptor Nesting Habitat (WRNH)



- Notes**
- Coordinate System: NAD 1983 UTM Zone 16N
  - Base features produced under license with the Ontario Ministry of Natural Resources © Queen's Printer for Ontario, 2013.
  - Orthographic imagery provided by © USGS, 2013. Imagery taken in 2008.



Stantec

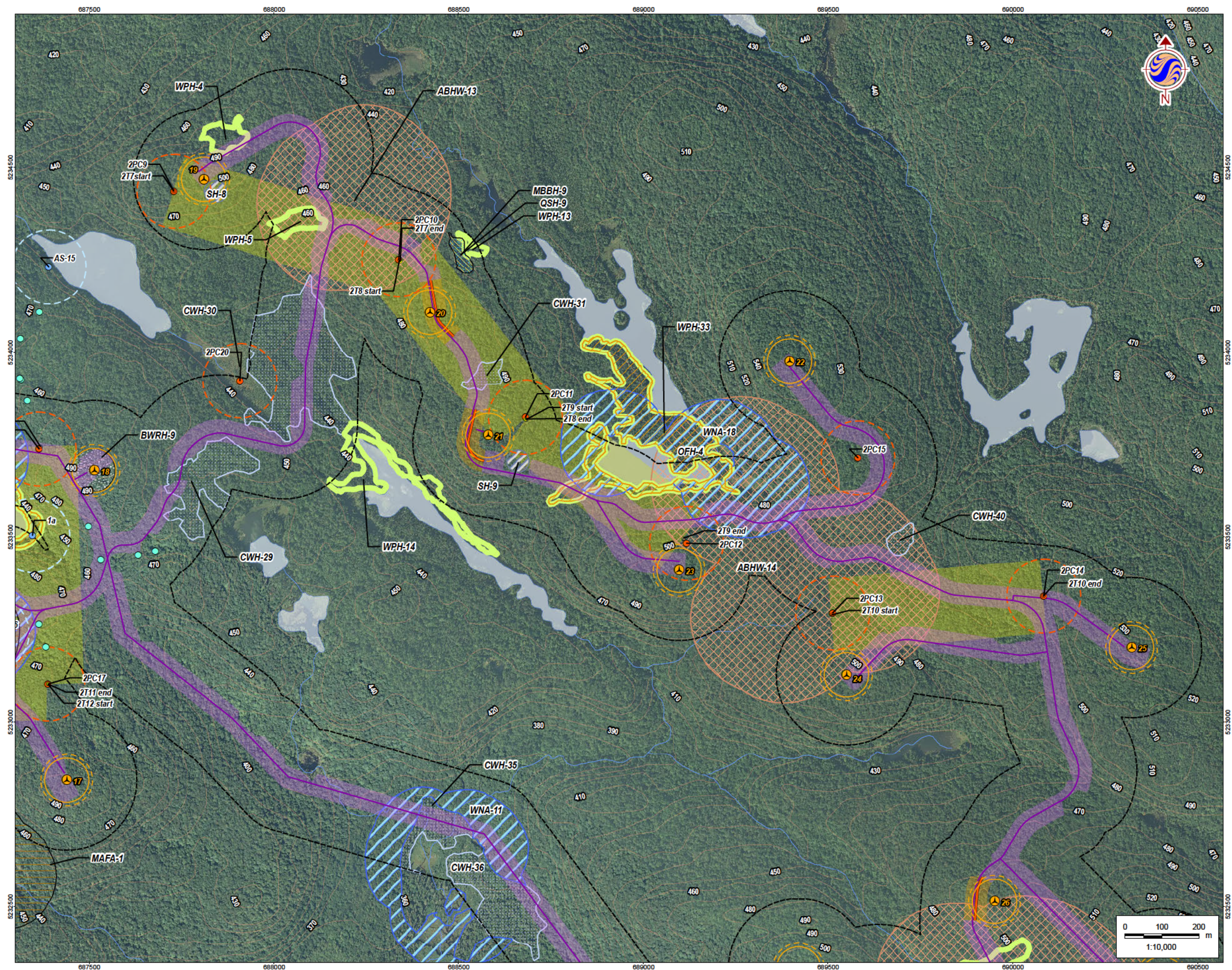
January 2013  
160960771

Client/Project  
 Bow Lake Wind Farm  
 Nodin Kitagan Limited Partnership and Nodin Kitagan 2  
 Limited Partnership, through their General Partners  
 Shongwish Nodin Kitagan GP Corp. and Shongwish  
 Nodin Kitagan 2 GP Corp.

Figure No.  
 H-1.5

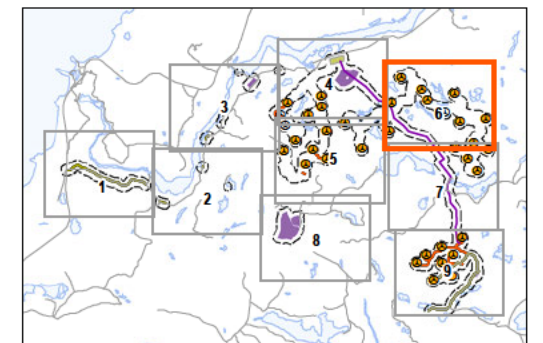
Title  
 EOS - Wildlife Survey Locations





## Legend

- 120m Zone of Investigation**
- Project Components**
- Turbine Location
  - Gate Location
  - Meteorological Tower
  - Proposed Water Extraction Location
  - Access Road (New)
  - Access Road (Upgrade)
  - Overhead/Underground Collector Line
  - Access Road Corridor
  - Collector Line Corridor
  - Turbine Sweep
  - Turbine Laydown
  - Construction Compound
  - Construction Compound & Welfare Building
  - Construction Compound & Transformer Station/Operations & Maintenance Building
- Existing Features**
- Expressway / Highway
  - Road
  - Elevation Contour
  - Existing Transmission Line
  - Watercourse
  - Waterbody
  - Patent Land
- Wildlife Surveys**
- Salamander Trapping Survey (ABH#)
  - Amphibian Egg Mass Survey (ABH#)
  - Bat Exit Survey
- Amphibian Call Counts**
- MKI (ABH#)
  - Stantec (AS#)
  - Amphibian Call Count - 100m Radius
- Breeding Bird Surveys**
- Point Count (PC)
  - Transect (T)
  - Breeding Bird Survey - 100m Radius
  - Breeding Bird Transect - 100m Audible/Visual Range
- Candidate Significant Wildlife Habitat**
- Amphibian Breeding Habitat - Woodlands (ABHW)
  - Blue Wild Rye Habitat (BWRH)
  - Canada Warbler Habitat (CWH)
  - Marsh Bird Breeding Habitat (MBBH)
  - Moose Aquatic Feeding Area (MAFA)
  - Mountain Fir-moss Habitat (MFH)
  - Olive-sided Flycatcher Habitat (OFH)
  - Quill Spike-rush Habitat (QSH)
  - Snake Hibernaculum (SH)
  - Turtle Overwintering Area
  - Waterfowl Nesting Area
  - Waterfowl Stopover Area-Aquatic (WSAA)
  - Woolly Beach Heath Habitat (WBBH)
  - Woodland Pinedrops Habitat (WPH)
  - Woodland Raptor Nesting Habitat (WRNH)



## Notes

- Coordinate System: NAD 1983 UTM Zone 16N
- Base features produced under license with the Ontario Ministry of Natural Resources © Queen's Printer for Ontario, 2013.
- Orthographic imagery provided by © USGS, 2013. Imagery taken in 2008.



**Stantec**

January 2013  
160960771

Client/Project

Bow Lake Wind Farm  
Nodin Kitagan Limited Partnership and Nodin Kitagan 2  
Limited Partnership, through their General Partners  
Shongwish Nodin Kitagan GP Corp. and Shongwish  
Nodin Kitagan 2 GP Corp.

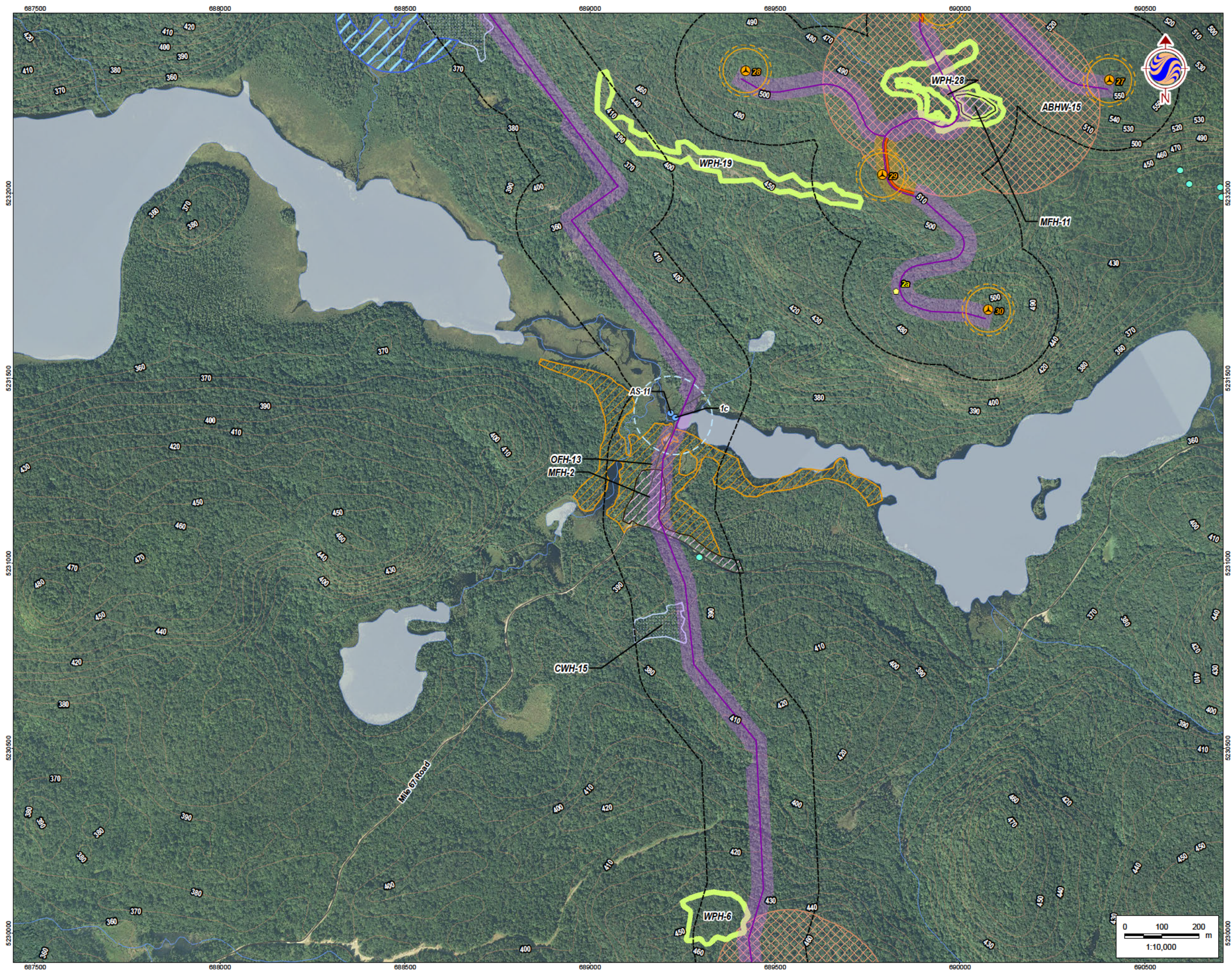
Figure No.

H-1.6

Title

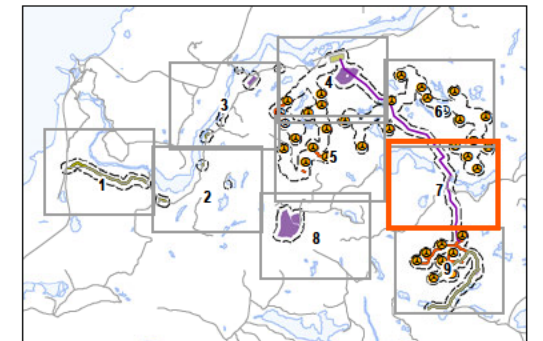
**EOS - Wildlife Survey Locations**





## Legend

- 120m Zone of Investigation
- Project Components**
  - Turbine Location
  - Gate Location
  - Meteorological Tower
  - Proposed Water Extraction Location
  - Access Road (New)
  - Access Road (Upgrade)
  - Overhead/Underground Collector Line
  - Access Road Corridor
  - Collector Line Corridor
  - Turbine Sweep
  - Turbine Laydown
  - Construction Compound
  - Construction Compound & Welfare Building
  - Construction Compound & Transformer Station/Operations & Maintenance Building
- Existing Features**
  - Expressway / Highway
  - Road
  - Elevation Contour
  - Existing Transmission Line
  - Watercourse
  - Waterbody
  - Patent Land
- Wildlife Surveys**
  - Salamander Trapping Survey (ABH#)
  - Amphibian Egg Mass Survey (ABH#)
  - Bat Exit Survey
- Amphibian Call Counts**
  - MKI (ABH#)
  - Stantec (AS#)
  - Amphibian Call Count - 100m Radius
- Breeding Bird Surveys**
  - Point Count (PC)
  - Transect (T)
  - Breeding Bird Survey - 100m Radius
  - Breeding Bird Transect - 100m Audible/Visual Range
- Candidate Significant Wildlife Habitat**
  - Amphibian Breeding Habitat - Woodlands (ABHW)
  - Blue Wild Rye Habitat (BWRH)
  - Canada Warbler Habitat (CWH)
  - Marsh Bird Breeding Habitat (MBBH)
  - Moose Aquatic Feeding Area (MAFA)
  - Mountain Fir-moss Habitat (MFH)
  - Olive-sided Flycatcher Habitat (OFH)
  - Quill Spike-rush Habitat (QSH)
  - Snake Hibernaculum (SH)
  - Turtle Overwintering Area
  - Waterfowl Nesting Area
  - Waterfowl Stopover Area-Aquatic (WSAA)
  - Woolly Beach Heath Habitat (WBBH)
  - Woodland Pinedrops Habitat (WPH)
  - Woodland Raptor Nesting Habitat (WRNH)



## Notes

- Coordinate System: NAD 1983 UTM Zone 16N
- Base features produced under license with the Ontario Ministry of Natural Resources © Queen's Printer for Ontario, 2013.
- Orthographic imagery provided by © USGS, 2013. Imagery taken in 2008.



**Stantec**

January 2013  
160960771

Client/Project

Bow Lake Wind Farm  
Nodin Kitagan Limited Partnership and Nodin Kitagan 2  
Limited Partnership, through their General Partners  
Shongwish Nodin Kitagan GP Corp. and Shongwish  
Nodin Kitagan 2 GP Corp.

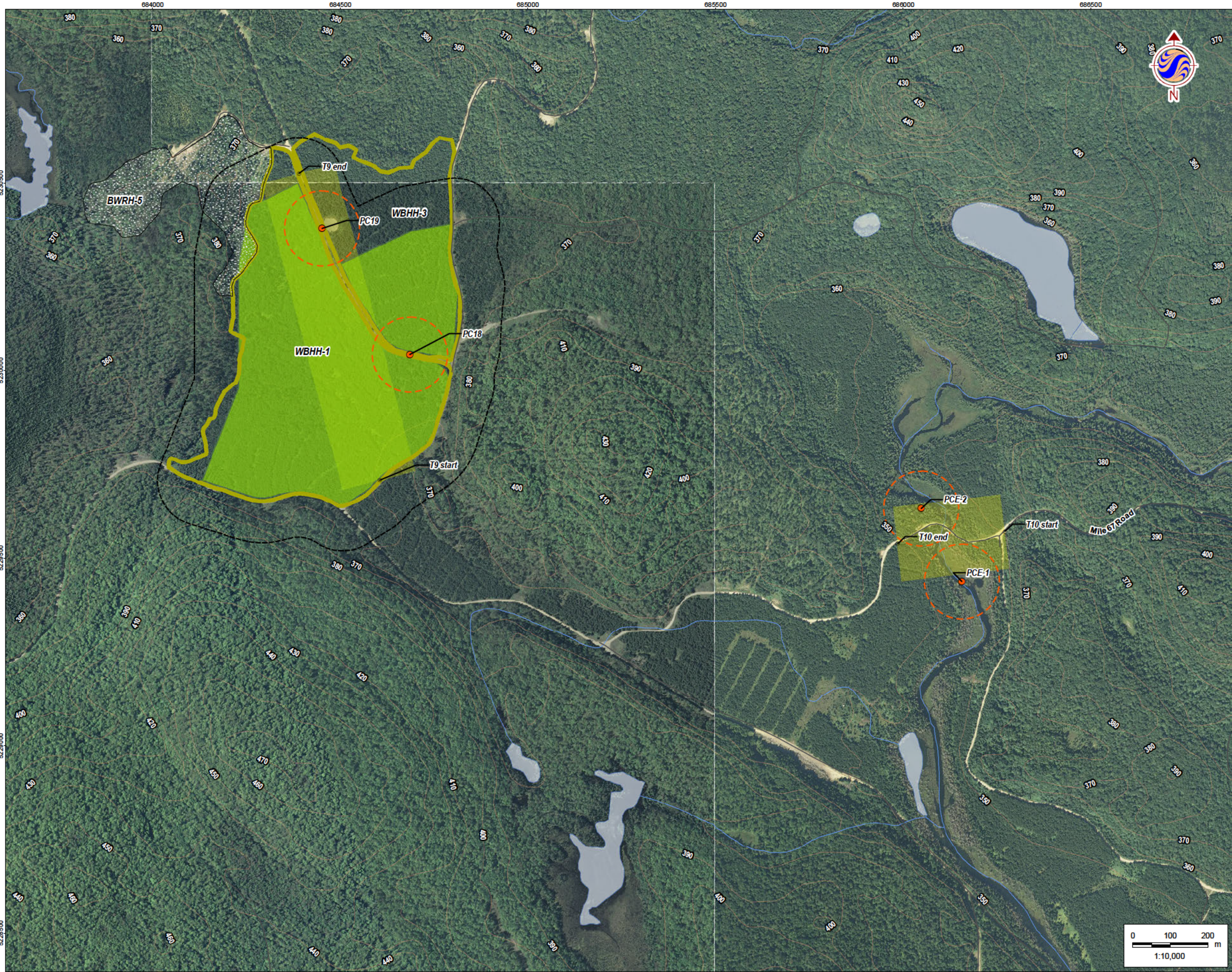
Figure No.

H-1.7

Title

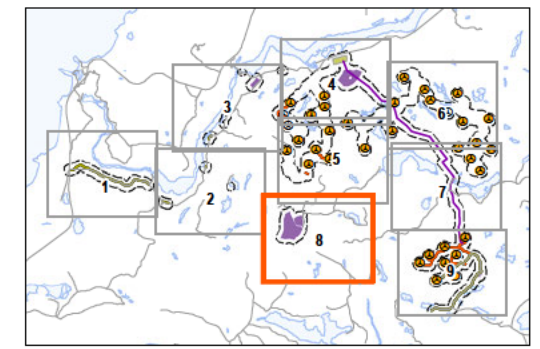
**EOS - Wildlife Survey Locations**





**Legend**

- 120m Zone of Investigation
- Project Components**
  - Turbine Location
  - Gate Location
  - Meteorological Tower
  - Proposed Water Extraction Location
  - Access Road (New)
  - Access Road (Upgrade)
  - Overhead/Underground Collector Line
  - Access Road Corridor
  - Collector Line Corridor
  - Turbine Sweep
  - Turbine Laydown
  - Construction Compound
  - Construction Compound & Welfare Building
  - Construction Compound & Transformer Station/Operations & Maintenance Building
- Existing Features**
  - Expressway / Highway
  - Road
  - Elevation Contour
  - Existing Transmission Line
  - Watercourse
  - Waterbody
  - Patent Land
- Wildlife Surveys**
  - Salamander Trapping Survey (ABH#)
  - Amphibian Egg Mass Survey (ABH#)
  - Bat Exit Survey
- Amphibian Call Counts**
  - MKI (ABH#)
  - Stantec (AS#)
  - Amphibian Call Count - 100m Radius
- Breeding Bird Surveys**
  - Point Count (PC)
  - Transect (T)
  - Breeding Bird Survey - 100m Radius
  - Breeding Bird Transect - 100m Audible/Visual Range
- Candidate Significant Wildlife Habitat**
  - Amphibian Breeding Habitat - Woodlands (ABHW)
  - Blue Wild Rye Habitat (BWRH)
  - Canada Warbler Habitat (CWH)
  - Marsh Bird Breeding Habitat (MBBH)
  - Moose Aquatic Feeding Area (MAFA)
  - Mountain Fir-moss Habitat (MFH)
  - Olive-sided Flycatcher Habitat (OFH)
  - Quill Spike-rush Habitat (QSH)
  - Snake Hibernaculum (SH)
  - Turtle Overwintering Area
  - Waterfowl Nesting Area
  - Waterfowl Stopover Area-Aquatic (WSAA)
  - Woolly Beach Heath Habitat (WBBH)
  - Woodland Pinedrops Habitat (WPH)
  - Woodland Raptor Nesting Habitat (WRNH)



- Notes**
- Coordinate System: NAD 1983 UTM Zone 16N
  - Base features produced under license with the Ontario Ministry of Natural Resources © Queen's Printer for Ontario, 2013.
  - Orthographic imagery provided by © USGS, 2013. Imagery taken in 2008.



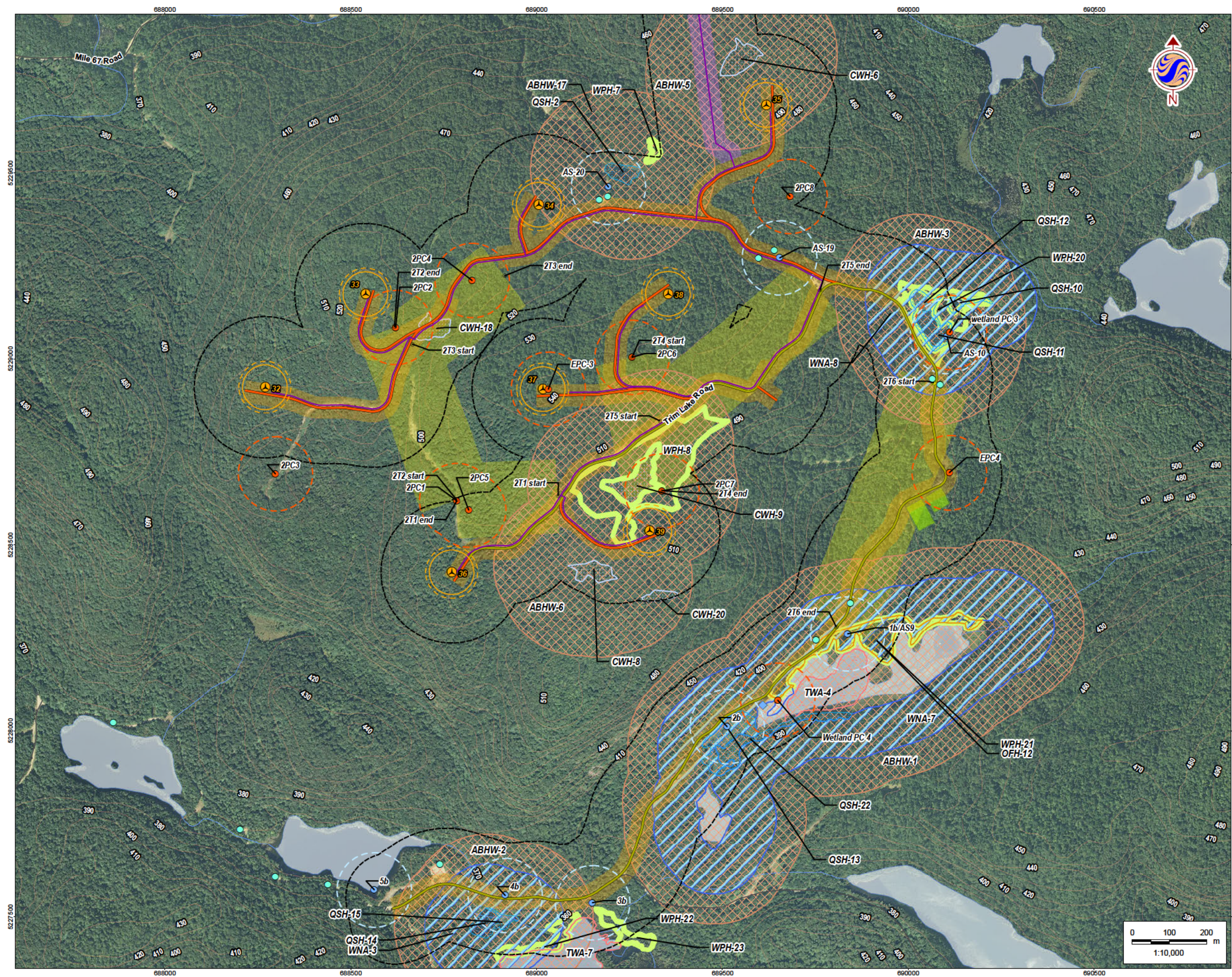
**Stantec**

Client/Project  
Bow Lake Wind Farm  
Nodin Kitagan Limited Partnership and Nodin Kitagan 2 Limited Partnership, through their General Partners Shongwish Nodin Kitagan GP Corp. and Shongwish Nodin Kitagan 2 GP Corp.

Figure No.  
H-1.8

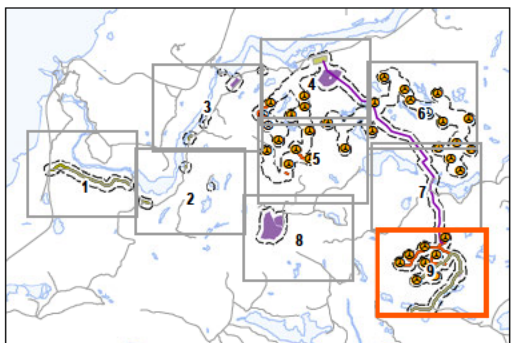
Title  
**EOS - Wildlife Survey Locations**





## Legend

- 120m Zone of Investigation**
- Project Components**
- Turbine Location
  - Gate Location
  - Meteorological Tower
  - Proposed Water Extraction Location
  - Access Road (New)
  - Access Road (Upgrade)
  - Overhead/Underground Collector Line
  - Access Road Corridor
  - Collector Line Corridor
  - Turbine Sweep
  - Turbine Laydown
  - Construction Compound
  - Construction Compound & Welfare Building
  - Construction Compound & Transformer Station/Operations & Maintenance Building
- Existing Features**
- Expressway / Highway
  - Road
  - Elevation Contour
  - Existing Transmission Line
  - Watercourse
  - Waterbody
  - Patent Land
- Wildlife Surveys**
- Salamander Trapping Survey (ABH#)
  - Amphibian Egg Mass Survey (ABH#)
  - Bat Exit Survey
- Amphibian Call Counts**
- MKI (ABH#)
  - Stantec (AS#)
  - Amphibian Call Count - 100m Radius
- Breeding Bird Surveys**
- Point Count (PC)
  - Transect (T)
  - Breeding Bird Survey - 100m Radius
  - Breeding Bird Transect - 100m Audible/Visual Range
- Candidate Significant Wildlife Habitat**
- Amphibian Breeding Habitat - Woodlands (ABHW)
  - Blue Wild Rye Habitat (BWRH)
  - Canada Warbler Habitat (CWH)
  - Marsh Bird Breeding Habitat (MBBH)
  - Moose Aquatic Feeding Area (MAFA)
  - Mountain Fir-moss Habitat (MFH)
  - Olive-sided Flycatcher Habitat (OFH)
  - Quill Spike-rush Habitat (QSH)
  - Snake Hibernaculum (SH)
  - Turtle Overwintering Area
  - Waterfowl Nesting Area
  - Waterfowl Stopover Area-Aquatic (WSAA)
  - Woolly Beach Heath Habitat (WBBH)
  - Woodland Pinedrops Habitat (WPH)
  - Woodland Raptor Nesting Habitat (WRNH)



## Notes

- Coordinate System: NAD 1983 UTM Zone 16N
- Base features produced under license with the Ontario Ministry of Natural Resources © Queen's Printer for Ontario, 2013.
- Orthographic imagery provided by © USGS, 2013. Imagery taken in 2008.



**Stantec**

January 2013  
160960771

Client/Project

Bow Lake Wind Farm  
Nodin Kitagan Limited Partnership and Nodin Kitagan 2  
Limited Partnership, through their General Partners  
Shongwish Nodin Kitagan GP Corp. and Shongwish  
Nodin Kitagan 2 GP Corp.

Figure No.

H-1.9

Title

**EOS - Wildlife Survey Locations**