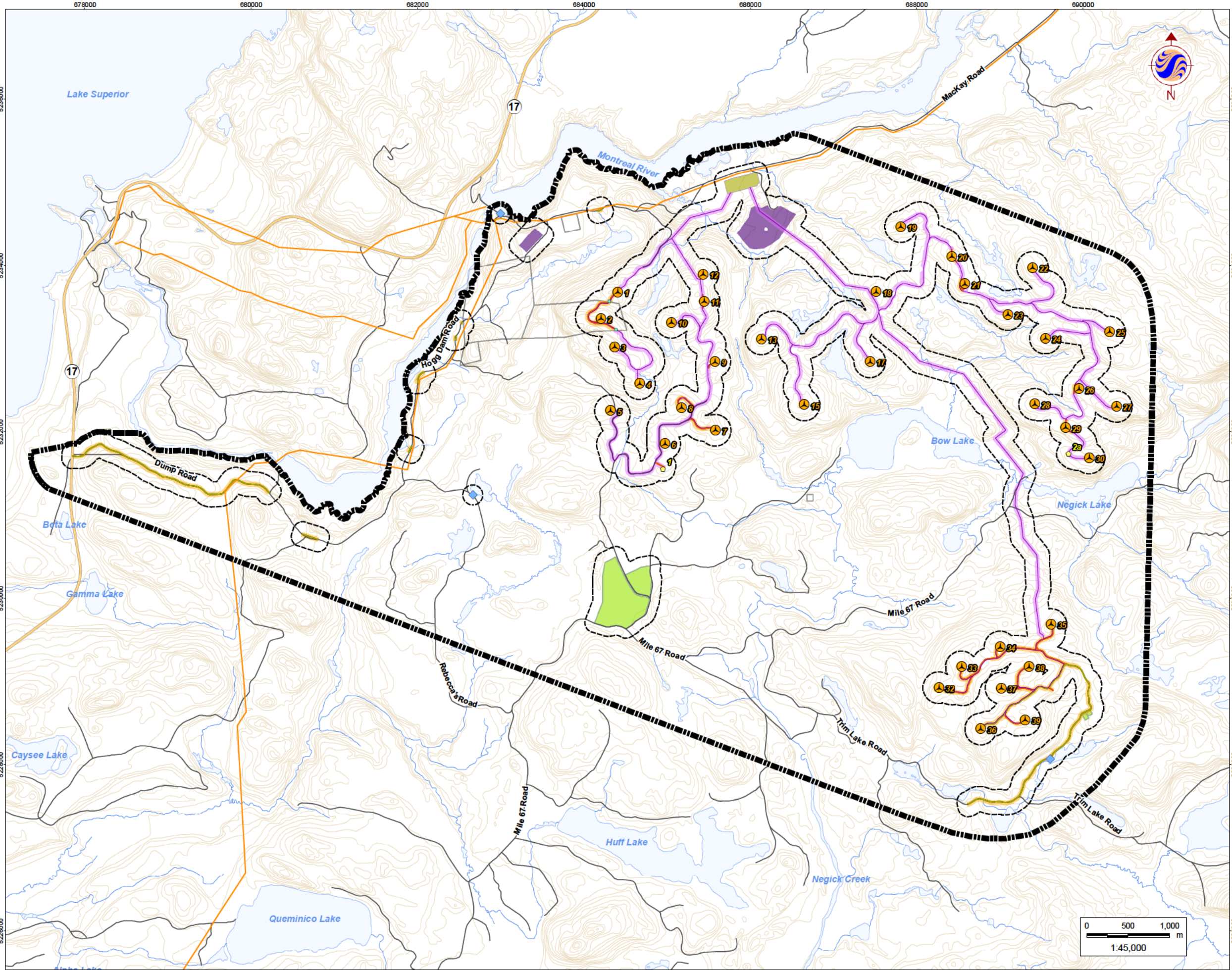


# **Appendix A**

## **Figures**





**Legend**

Study Area

120m Zone of Investigation

**Project Components**

Turbine Location

Gate Location

Meteorological Tower

Proposed Water Extraction Location

Access Road (New)

Access Road (Upgrade)

Overhead/Underground Collector Line

Access Road Corridor

Collector Line Corridor

Construction Compound

Construction Compound & Welfare Building

Construction Compound & Transformer Station/Operations & Maintenance Building

**Existing Features**

Expressway / Highway

Road

Elevation Contour

Existing Transmission Line

Watercourse

Waterbody

Patent Land

- Notes**
1. Coordinate System: NAD 1983 UTM Zone 16N

2. Base features produced under license with the Ontario Ministry of Natural Resources © Queen's Printer for Ontario, 2013.



**Stantec**

Client/Project

Bow Lake Wind Farm  
Nodin Kitagan Limited Partnership and Nodin Kitagan 2 Limited Partnership, through their General Partners Shongwish Nodin Kitagan GP Corp. and Shongwish Nodin Kitagan 2 GP Corp.

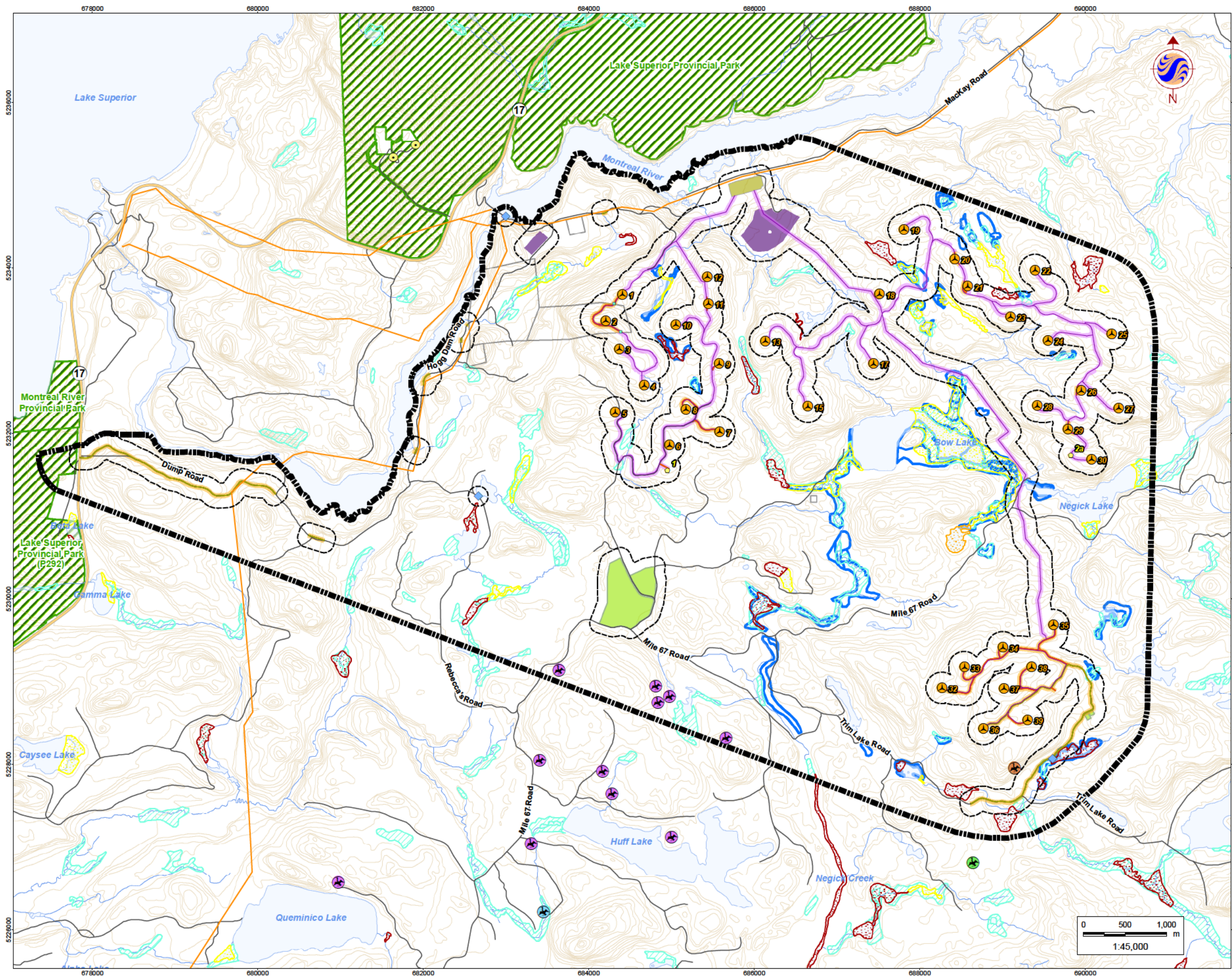
Figure No.

1.0

Title

**Project Location & Study Area - Overview**





## Legend

- Study Area
- 120m Zone of Investigation
- Project Components**
  - Turbine Location
  - Gate Location
  - Meteorological Tower
  - Proposed Water Extraction Location
  - Access Road (New)
  - Access Road (Upgrade)
  - Overhead/Underground Collector Line
  - Access Road Corridor
  - Collector Line Corridor
  - Construction Compound
  - Construction Compound & Welfare Building
  - Construction Compound & Transformer Station/Operations & Maintenance Building
- Existing Features**
  - Expressway / Highway
  - Road
  - Elevation Contour
  - Existing Transmission Line
  - Watercourse
  - Waterbody
  - Patent Land
  - Communication Tower
  - Broadwing Hawk Nesting Site
  - Northern Goshawk Nesting Site
  - Red Tailed Hawk Nesting Site
  - Sandhill Crane Nesting Site
  - Provincial Park
  - Wetland (MNR-LIO)
  - Wetland (delineated by NRSI)
- Moose Aquatic Feeding Area**
  - Class 1
  - Class 2
  - Class 3

## Notes

- Coordinate System: NAD 1983 UTM Zone 16N
- Base features produced under license with the Ontario Ministry of Natural Resources © Queen's Printer for Ontario, 2013.



**Stantec**

January 2013  
160660771

Client/Project

Bow Lake Wind Farm  
Nodin Kitagan Limited Partnership and Nodin Kitagan 2 Limited Partnership, through their General Partners Shongwish Nodin Kitagan GP Corp. and Shongwish Nodin Kitagan 2 GP Corp.

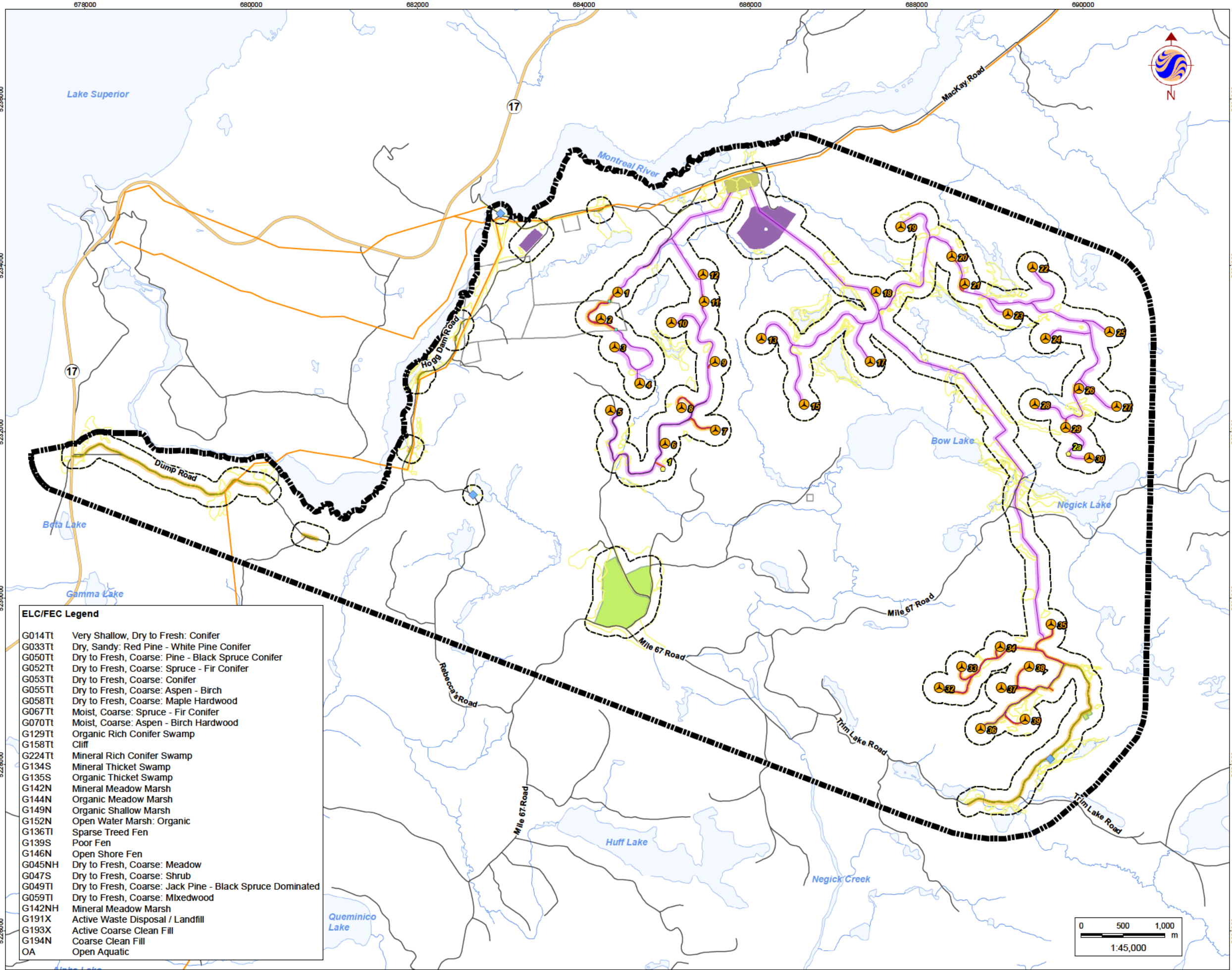
Figure No.

2.0

Title

**Natural Features - Records Review**





**Legend**

Study Area

120m Zone of Investigation

**Project Components**

Turbine Location

Gate Location

Meteorological Tower

Proposed Water Extraction Location

Access Road (New)

Access Road (Upgrade)

Overhead/Underground Collector Line

Access Road Corridor

Collector Line Corridor

Construction Compound

Construction Compound & Welfare Building

Construction Compound & Transformer Station/Operations & Maintenance Building

**Existing Features**

Expressway / Highway

Road

Existing Transmission Line

Watercourse

Waterbody

Patent Land

**Natural Features**

Vegetation Community Boundary

- Notes**
1. Coordinate System: NAD 1983 UTM Zone 16N

2. Base features produced under license with the Ontario Ministry of Natural Resources © Queen's Printer for Ontario, 2013.



**Stantec**

January 2013  
160660771

Client/Project

Bow Lake Wind Farm  
Nodin Kitagan Limited Partnership and Nodin Kitagan 2 Limited Partnership, through their General Partners Shongwish Nodin Kitagan GP Corp. and Shongwish Nodin Kitagan 2 GP Corp.

Figure No.

3.0

Title

**ELC/FEC Vegetation Communities - Overview**





## Legend

- 120m Zone of Investigation
- Project Components**
  - Turbine Location
  - Gate Location
  - Meteorological Tower
  - Proposed Water Extraction Location
  - Access Road (New)
  - Access Road (Upgrade)
  - Overhead/Underground Collector Line
  - Access Road Corridor
  - Collector Line Corridor
  - Turbine Sweep Area
  - Turbine Laydown Area
  - Construction Compound
  - Construction Compound & Welfare Building
  - Construction Compound & Transformer Station/Operations & Maintenance Building
- Existing Features**
  - Expressway / Highway
  - Road
  - Elevation Contour
  - Existing Transmission Line
  - Watercourse
  - Waterbody
  - Patent Land
- Natural Features**
  - Vegetation Community Boundary

## ELC/FEC Legend

- |        |  |
|--------|--|
| G014Tt | Very Shallow, Dry to Fresh: Conifer                      |
| G033Tt | Dry, Sandy: Red Pine - White Pine Conifer                |
| G050Tt | Dry to Fresh, Coarse: Pine - Black Spruce Conifer        |
| G052Tt | Dry to Fresh, Coarse: Spruce - Fir Conifer               |
| G053Tt | Dry to Fresh, Coarse: Conifer                            |
| G055Tt | Dry to Fresh, Coarse: Aspen - Birch                      |
| G058Tt | Dry to Fresh, Coarse: Maple Hardwood                     |
| G067Tt | Moist, Coarse: Spruce - Fir Conifer                      |
| G070Tt | Moist, Coarse: Aspen - Birch Hardwood                    |
| G129Tt | Organic Rich Conifer Swamp                               |
| G158Tt | Cliff  |
| G224Tt | Mineral Rich Conifer Swamp                               |
| G134S  | Mineral Thicket Swamp                                    |
| G135S  | Organic Thicket Swamp                                    |
| G142N  | Mineral Meadow Marsh                                     |
| G144N  | Organic Meadow Marsh                                     |
| G149N  | Organic Shallow Marsh                                    |
| G152N  | Open Water Marsh: Organic                                |
| G136Tt | Sparse Treed Fen   |
| G139S  | Poor Fen   |
| G146N  | Open Shore Fen   |
| G045NH | Dry to Fresh, Coarse: Meadow                             |
| G047S  | Dry to Fresh, Coarse: Shrub                              |
| G049Tt | Dry to Fresh, Coarse: Jack Pine - Black Spruce Dominated |
| G059Tt | Dry to Fresh, Coarse: Mixedwood                          |
| G142NH | Mineral Meadow Marsh                                     |
| G191X  | Active Waste Disposal / Landfill                         |
| G193X  | Active Coarse Clean Fill                                 |
| G194N  | Coarse Clean Fill  |
| OA     | Open Aquatic   |

## Notes

- Coordinate System: NAD 1983 UTM Zone 16N
- Base features produced under license with the Ontario Ministry of Natural Resources © Queen's Printer for Ontario, 2013.
- Orthographic imagery provided by © USGS, 2013. Imagery taken in 2008.



**Stantec**

January 2013  
160960771

Client/Project

Bow Lake Wind Farm  
Nodin Kitagan Limited Partnership and Nodin Kitagan 2  
Limited Partnership, through their General Partners  
Shongwish Nodin Kitagan GP Corp. and Shongwish  
Nodin Kitagan 2 GP Corp.

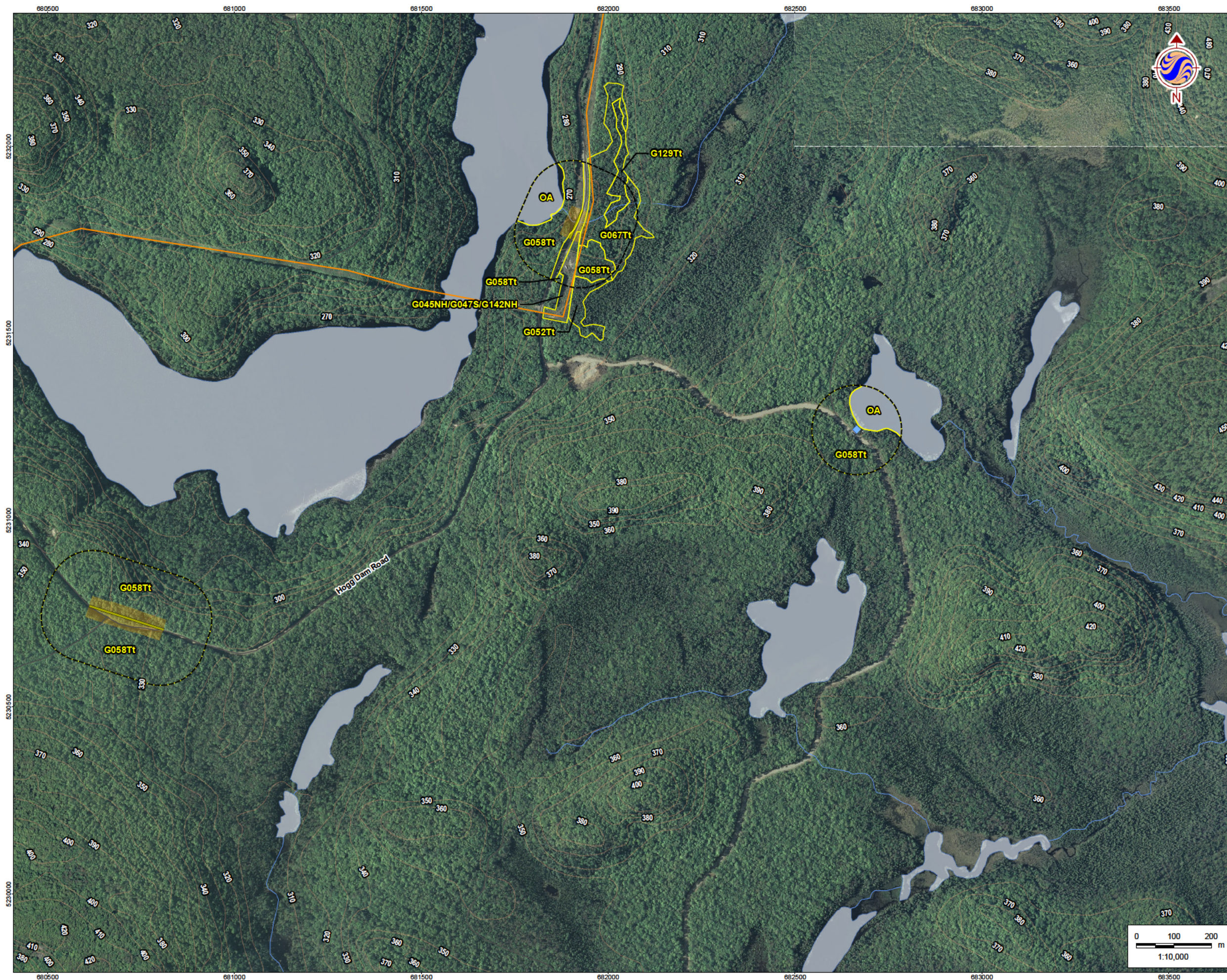
Figure No.

3.1

Title

**ELC/FEC Vegetation Communities**





## Legend

- 120m Zone of Investigation
- Project Components**
  - Turbine Location
  - Gate Location
  - Meteorological Tower
  - Proposed Water Extraction Location
  - Access Road (New)
  - Access Road (Upgrade)
  - Overhead/Underground Collector Line
  - Access Road Corridor
  - Collector Line Corridor
  - Turbine Sweep Area
  - Turbine Laydown Area
  - Construction Compound
  - Construction Compound & Welfare Building
  - Construction Compound & Transformer Station/Operations & Maintenance Building
- Existing Features**
  - Expressway / Highway
  - Road
  - Elevation Contour
  - Existing Transmission Line
  - Watercourse
  - Waterbody
  - Patent Land
- Natural Features**
  - Vegetation Community Boundary

## ELC/FEC Legend

- |        |  |
|--------|--|
| G014Tt | Very Shallow, Dry to Fresh: Conifer                      |
| G033Tt | Dry, Sandy: Red Pine - White Pine Conifer                |
| G050Tt | Dry to Fresh, Coarse: Pine - Black Spruce Conifer        |
| G052Tt | Dry to Fresh, Coarse: Spruce - Fir Conifer               |
| G053Tt | Dry to Fresh, Coarse: Conifer                            |
| G055Tt | Dry to Fresh, Coarse: Aspen - Birch                      |
| G058Tt | Dry to Fresh, Coarse: Maple Hardwood                     |
| G067Tt | Moist, Coarse: Spruce - Fir Conifer                      |
| G070Tt | Moist, Coarse: Aspen - Birch Hardwood                    |
| G129Tt | Organic Rich Conifer Swamp                               |
| G158Tt | Cliff  |
| G224Tt | Mineral Rich Conifer Swamp                               |
| G134S  | Mineral Thicket Swamp                                    |
| G135S  | Organic Thicket Swamp                                    |
| G142N  | Mineral Meadow Marsh                                     |
| G144N  | Organic Meadow Marsh                                     |
| G149N  | Organic Shallow Marsh                                    |
| G152N  | Open Water Marsh: Organic                                |
| G136Tt | Sparse Treed Fen   |
| G139S  | Poor Fen   |
| G146N  | Open Shore Fen   |
| G045NH | Dry to Fresh, Coarse: Meadow                             |
| G047S  | Dry to Fresh, Coarse: Shrub                              |
| G049Tt | Dry to Fresh, Coarse: Jack Pine - Black Spruce Dominated |
| G059Tt | Dry to Fresh, Coarse: Mixedwood                          |
| G142NH | Mineral Meadow Marsh                                     |
| G191X  | Active Waste Disposal / Landfill                         |
| G193X  | Active Coarse Clean Fill                                 |
| G194N  | Coarse Clean Fill  |
| OA     | Open Aquatic   |

## Notes

- Coordinate System: NAD 1983 UTM Zone 16N
- Base features produced under license with the Ontario Ministry of Natural Resources © Queen's Printer for Ontario, 2013.
- Orthographic imagery provided by © USGS, 2013. Imagery taken in 2008.



**Stantec**

January 2013  
160960771

Client/Project

Bow Lake Wind Farm  
Nodin Kitagan Limited Partnership and Nodin Kitagan 2  
Limited Partnership, through their General Partners  
Shongwish Nodin Kitagan GP Corp. and Shongwish  
Nodin Kitagan 2 GP Corp.

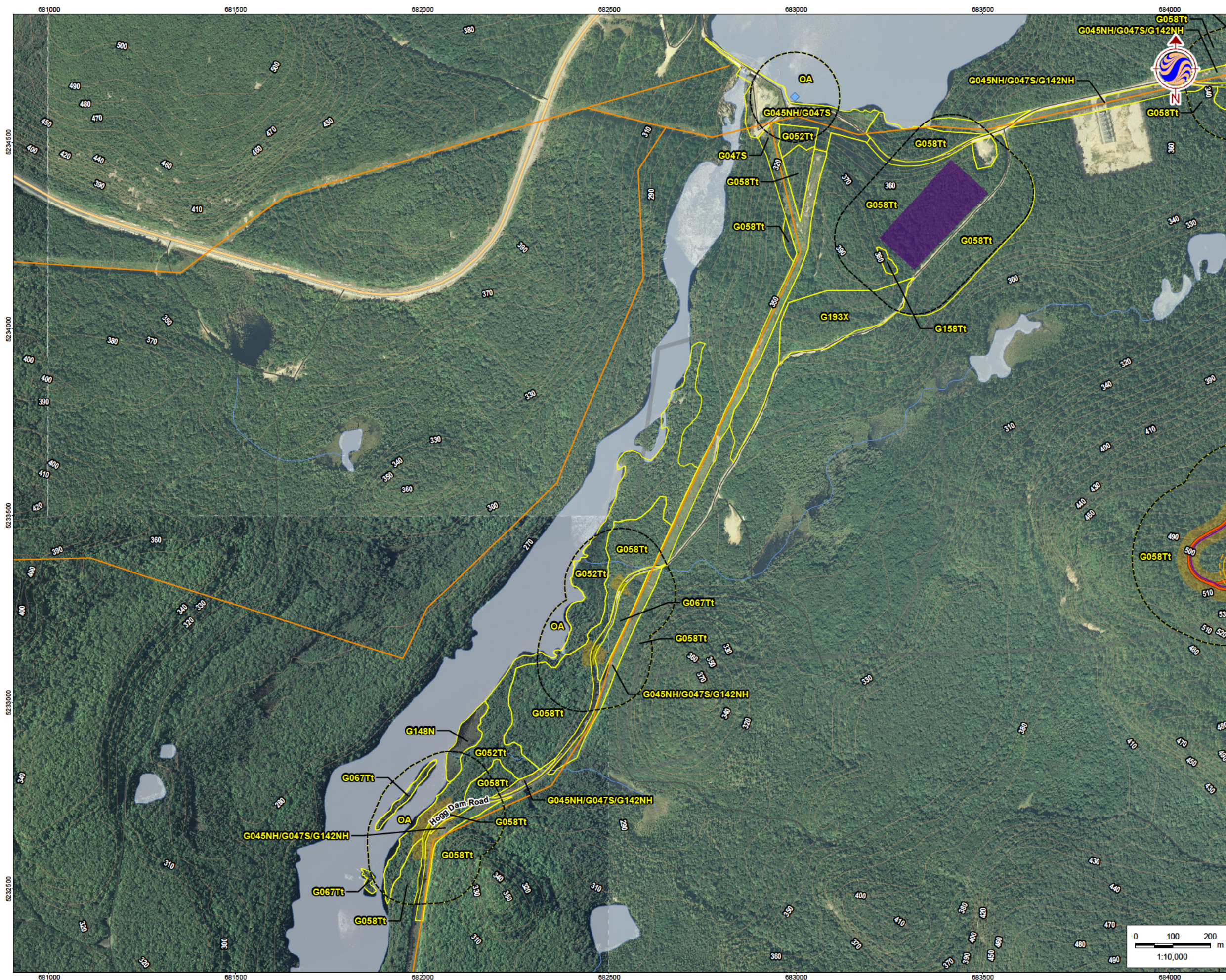
Figure No.

3.2

Title

**ELC/FEC Vegetation Communities**





## Legend

- 120m Zone of Investigation
- Project Components**
  - Turbine Location
  - Gate Location
  - Meteorological Tower
  - Proposed Water Extraction Location
  - Access Road (New)
  - Access Road (Upgrade)
  - Overhead/Underground Collector Line
  - Access Road Corridor
  - Collector Line Corridor
  - Turbine Sweep Area
  - Turbine Laydown Area
  - Construction Compound
  - Construction Compound & Welfare Building
  - Construction Compound & Transformer Station/Operations & Maintenance Building
- Existing Features**
  - Expressway / Highway
  - Road
  - Elevation Contour
  - Existing Transmission Line
  - Watercourse
  - Waterbody
  - Patent Land
- Natural Features**
  - Vegetation Community Boundary

## ELC/FEC Legend

- |        |  |
|--------|--|
| G014Tt | Very Shallow, Dry to Fresh: Conifer                      |
| G033Tt | Dry, Sandy: Red Pine - White Pine Conifer                |
| G050Tt | Dry to Fresh, Coarse: Pine - Black Spruce Conifer        |
| G052Tt | Dry to Fresh, Coarse: Spruce - Fir Conifer               |
| G053Tt | Dry to Fresh, Coarse: Conifer                            |
| G055Tt | Dry to Fresh, Coarse: Aspen - Birch                      |
| G058Tt | Dry to Fresh, Coarse: Maple Hardwood                     |
| G067Tt | Moist, Coarse: Spruce - Fir Conifer                      |
| G070Tt | Moist, Coarse: Aspen - Birch Hardwood                    |
| G129Tt | Organic Rich Conifer Swamp                               |
| G158Tt | Cliff  |
| G224Tt | Mineral Rich Conifer Swamp                               |
| G134S  | Mineral Thicket Swamp                                    |
| G135S  | Organic Thicket Swamp                                    |
| G142N  | Mineral Meadow Marsh                                     |
| G144N  | Organic Meadow Marsh                                     |
| G149N  | Organic Shallow Marsh                                    |
| G152N  | Open Water Marsh: Organic                                |
| G136Tt | Sparse Treed Fen   |
| G139S  | Poor Fen   |
| G146N  | Open Shore Fen   |
| G045NH | Dry to Fresh, Coarse: Meadow                             |
| G047S  | Dry to Fresh, Coarse: Shrub                              |
| G049Tt | Dry to Fresh, Coarse: Jack Pine - Black Spruce Dominated |
| G059Tt | Dry to Fresh, Coarse: Mixedwood                          |
| G142NH | Mineral Meadow Marsh                                     |
| G191X  | Active Waste Disposal / Landfill                         |
| G193X  | Active Coarse Clean Fill                                 |
| G194N  | Coarse Clean Fill  |
| OA     | Open Aquatic   |

## Notes

- Coordinate System: NAD 1983 UTM Zone 16N
- Base features produced under license with the Ontario Ministry of Natural Resources © Queen's Printer for Ontario, 2013.
- Orthographic imagery provided by © USGS, 2013. Imagery taken in 2008.



**Stantec**

January 2013  
160960771

## Client/Project

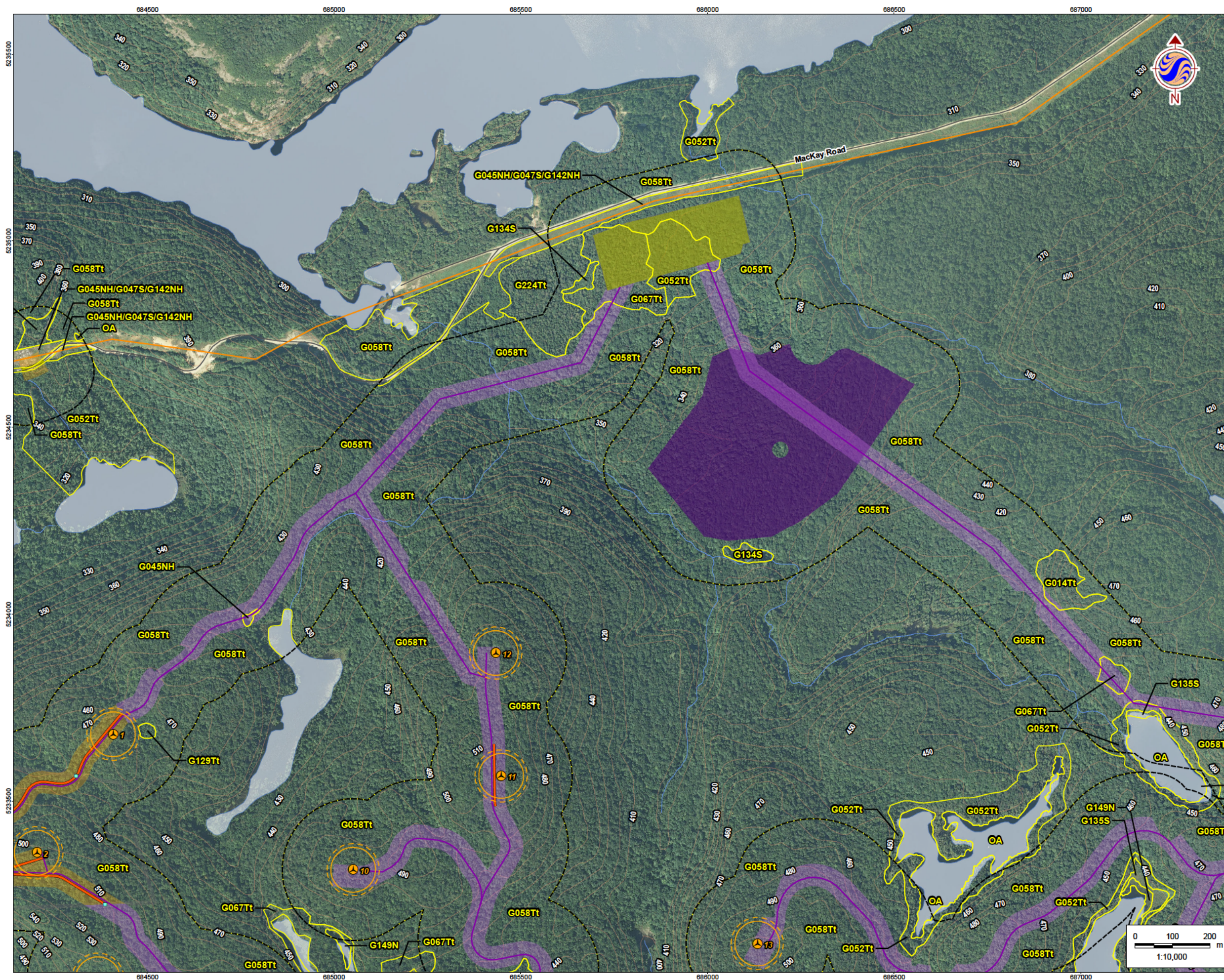
Bow Lake Wind Farm  
Nodin Kitagan Limited Partnership and Nodin Kitagan 2 Limited Partnership, through their General Partners Shongwish Nodin Kitagan GP Corp. and Shongwish Nodin Kitagan 2 GP Corp.

Figure No.  
**3.3**

Title

**ELC/FEC Vegetation Communities**





## Legend

- 120m Zone of Investigation
- Project Components**
  - Turbine Location
  - Gate Location
  - Meteorological Tower
  - Proposed Water Extraction Location
  - Access Road (New)
  - Access Road (Upgrade)
  - Overhead/Underground Collector Line
  - Access Road Corridor
  - Collector Line Corridor
  - Turbine Sweep Area
  - Turbine Laydown Area
  - Construction Compound
  - Construction Compound & Welfare Building
  - Construction Compound & Transformer Station/Operations & Maintenance Building
- Existing Features**
  - Expressway / Highway
  - Road
  - Elevation Contour
  - Existing Transmission Line
  - Watercourse
  - Waterbody
  - Patent Land
- Natural Features**
  - Vegetation Community Boundary

## ELC/FEC Legend

- |        |  |
|--------|--|
| G014Tt | Very Shallow, Dry to Fresh: Conifer                      |
| G033Tt | Dry, Sandy: Red Pine - White Pine Conifer                |
| G050Tt | Dry to Fresh, Coarse: Pine - Black Spruce Conifer        |
| G052Tt | Dry to Fresh, Coarse: Spruce - Fir Conifer               |
| G053Tt | Dry to Fresh, Coarse: Conifer                            |
| G055Tt | Dry to Fresh, Coarse: Aspen - Birch                      |
| G058Tt | Dry to Fresh, Coarse: Maple Hardwood                     |
| G067Tt | Moist, Coarse: Spruce - Fir Conifer                      |
| G070Tt | Moist, Coarse: Aspen - Birch Hardwood                    |
| G129Tt | Organic Rich Conifer Swamp                               |
| G158Tt | Cliff  |
| G224Tt | Mineral Rich Conifer Swamp                               |
| G134S  | Mineral Thicket Swamp                                    |
| G135S  | Organic Thicket Swamp                                    |
| G142N  | Mineral Meadow Marsh                                     |
| G144N  | Organic Meadow Marsh                                     |
| G149N  | Organic Shallow Marsh                                    |
| G152N  | Open Water Marsh: Organic                                |
| G136Tt | Sparse Treed Fen   |
| G139S  | Poor Fen   |
| G146N  | Open Shore Fen   |
| G045NH | Dry to Fresh, Coarse: Meadow                             |
| G047S  | Dry to Fresh, Coarse: Shrub                              |
| G049Tt | Dry to Fresh, Coarse: Jack Pine - Black Spruce Dominated |
| G059Tt | Dry to Fresh, Coarse: Mixedwood                          |
| G142NH | Mineral Meadow Marsh                                     |
| G191X  | Active Waste Disposal / Landfill                         |
| G193X  | Active Coarse Clean Fill                                 |
| G194N  | Coarse Clean Fill  |
| OA     | Open Aquatic   |

## Notes

- Coordinate System: NAD 1983 UTM Zone 16N
- Base features produced under license with the Ontario Ministry of Natural Resources © Queen's Printer for Ontario, 2013.
- Orthographic imagery provided by © USGS, 2013. Imagery taken in 2008.



**Stantec**

Client/Project

Bow Lake Wind Farm  
Nodin Kitagan Limited Partnership and Nodin Kitagan 2  
Limited Partnership, through their General Partners  
Shongwish Nodin Kitagan GP Corp. and Shongwish  
Nodin Kitagan 2 GP Corp.

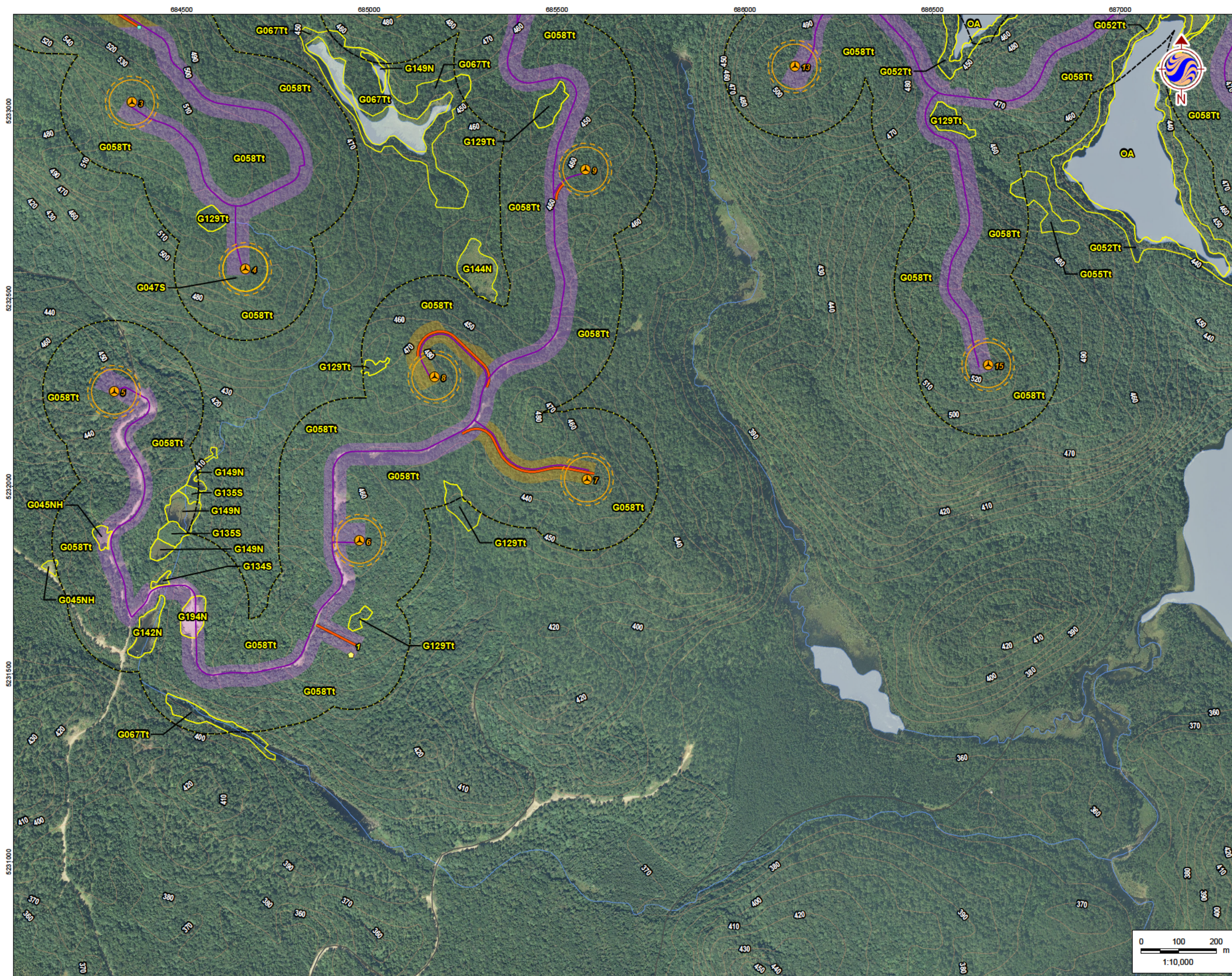
Figure No.

**3.4**

Title

**ELC/FEC Vegetation Communities**





## Legend

- 120m Zone of Investigation
- Project Components**
  - Turbine Location
  - Gate Location
  - Meteorological Tower
  - Proposed Water Extraction Location
  - Access Road (New)
  - Access Road (Upgrade)
  - Overhead/Underground Collector Line
  - Access Road Corridor
  - Collector Line Corridor
  - Turbine Sweep Area
  - Turbine Laydown Area
  - Construction Compound
  - Construction Compound & Welfare Building
  - Construction Compound & Transformer Station/Operations & Maintenance Building
- Existing Features**
  - Expressway / Highway
  - Road
  - Elevation Contour
  - Existing Transmission Line
  - Watercourse
  - Waterbody
  - Patent Land
- Natural Features**
  - Vegetation Community Boundary

## ELC/FEC Legend

- |        |  |
|--------|--|
| G014Tt | Very Shallow, Dry to Fresh: Conifer                      |
| G033Tt | Dry, Sandy: Red Pine - White Pine Conifer                |
| G050Tt | Dry to Fresh, Coarse: Pine - Black Spruce Conifer        |
| G052Tt | Dry to Fresh, Coarse: Spruce - Fir Conifer               |
| G053Tt | Dry to Fresh, Coarse: Conifer                            |
| G055Tt | Dry to Fresh, Coarse: Aspen - Birch                      |
| G058Tt | Dry to Fresh, Coarse: Maple Hardwood                     |
| G067Tt | Moist, Coarse: Spruce - Fir Conifer                      |
| G070Tt | Moist, Coarse: Aspen - Birch Hardwood                    |
| G129Tt | Organic Rich Conifer Swamp                               |
| G158Tt | Cliff  |
| G224Tt | Mineral Rich Conifer Swamp                               |
| G134S  | Mineral Thicket Swamp                                    |
| G135S  | Organic Thicket Swamp                                    |
| G142N  | Mineral Meadow Marsh                                     |
| G144N  | Organic Meadow Marsh                                     |
| G149N  | Organic Shallow Marsh                                    |
| G152N  | Open Water Marsh: Organic                                |
| G136Tt | Sparse Treed Fen   |
| G139S  | Poor Fen   |
| G146N  | Open Shore Fen   |
| G045NH | Dry to Fresh, Coarse: Meadow                             |
| G047S  | Dry to Fresh, Coarse: Shrub                              |
| G049Tt | Dry to Fresh, Coarse: Jack Pine - Black Spruce Dominated |
| G059Tt | Dry to Fresh, Coarse: Mixedwood                          |
| G142NH | Mineral Meadow Marsh                                     |
| G191X  | Active Waste Disposal / Landfill                         |
| G193X  | Active Coarse Clean Fill                                 |
| G194N  | Coarse Clean Fill  |
| OA     | Open Aquatic   |

## Notes

- Coordinate System: NAD 1983 UTM Zone 16N
- Base features produced under license with the Ontario Ministry of Natural Resources © Queen's Printer for Ontario, 2013.
- Orthographic imagery provided by © USGS, 2013. Imagery taken in 2008.



**Stantec**

January 2013  
160960771

## Client/Project

Bow Lake Wind Farm  
Nodin Kitagan Limited Partnership and Nodin Kitagan 2  
Limited Partnership, through their General Partners  
Shongwish Nodin Kitagan GP Corp. and Shongwish  
Nodin Kitagan 2 GP Corp.

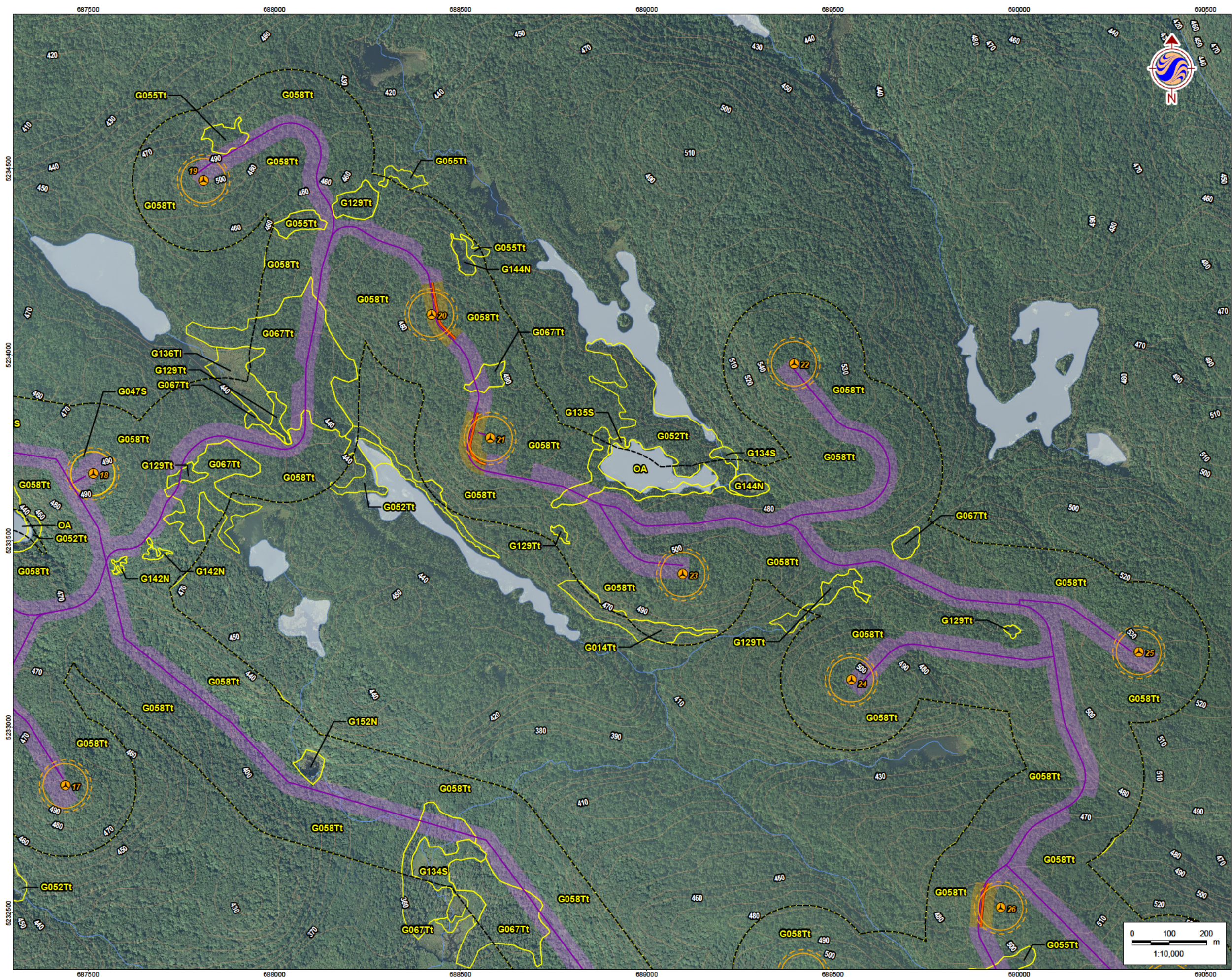
## Figure No.

3.5

## Title

**ELC/FEC Vegetation Communities**





## Legend

- 120m Zone of Investigation
- Project Components**
  - Turbine Location
  - Gate Location
  - Meteorological Tower
  - Proposed Water Extraction Location
  - Access Road (New)
  - Access Road (Upgrade)
  - Overhead/Underground Collector Line
  - Access Road Corridor
  - Collector Line Corridor
  - Turbine Sweep Area
  - Turbine Laydown Area
  - Construction Compound
  - Construction Compound & Welfare Building
  - Construction Compound & Transformer Station/Operations & Maintenance Building
- Existing Features**
  - Expressway / Highway
  - Road
  - Elevation Contour
  - Existing Transmission Line
  - Watercourse
  - Waterbody
  - Patent Land
- Natural Features**
  - Vegetation Community Boundary

## ELC/FEC Legend

- |        |  |
|--------|--|
| G014Tt | Very Shallow, Dry to Fresh: Conifer                      |
| G033Tt | Dry, Sandy: Red Pine - White Pine Conifer                |
| G050Tt | Dry to Fresh, Coarse: Pine - Black Spruce Conifer        |
| G052Tt | Dry to Fresh, Coarse: Spruce - Fir Conifer               |
| G053Tt | Dry to Fresh, Coarse: Conifer                            |
| G055Tt | Dry to Fresh, Coarse: Aspen - Birch                      |
| G058Tt | Dry to Fresh, Coarse: Maple Hardwood                     |
| G067Tt | Moist, Coarse: Spruce - Fir Conifer                      |
| G070Tt | Moist, Coarse: Aspen - Birch Hardwood                    |
| G129Tt | Organic Rich Conifer Swamp                               |
| G158Tt | Cliff  |
| G224Tt | Mineral Rich Conifer Swamp                               |
| G134S  | Mineral Thicket Swamp                                    |
| G135S  | Organic Thicket Swamp                                    |
| G142N  | Mineral Meadow Marsh                                     |
| G144N  | Organic Meadow Marsh                                     |
| G149N  | Organic Shallow Marsh                                    |
| G152N  | Open Water Marsh: Organic                                |
| G136Tt | Sparse Treed Fen   |
| G139S  | Poor Fen   |
| G146N  | Open Shore Fen   |
| G045NH | Dry to Fresh, Coarse: Meadow                             |
| G047S  | Dry to Fresh, Coarse: Shrub                              |
| G049Tt | Dry to Fresh, Coarse: Jack Pine - Black Spruce Dominated |
| G059Tt | Dry to Fresh, Coarse: Mixedwood                          |
| G142NH | Mineral Meadow Marsh                                     |
| G191X  | Active Waste Disposal / Landfill                         |
| G193X  | Active Coarse Clean Fill                                 |
| G194N  | Coarse Clean Fill  |
| OA     | Open Aquatic   |

## Notes

- Coordinate System: NAD 1983 UTM Zone 16N
- Base features produced under license with the Ontario Ministry of Natural Resources © Queen's Printer for Ontario, 2013.
- Orthographic imagery provided by © USGS, 2013. Imagery taken in 2008.



**Stantec**

January 2013  
160960771

Client/Project

Bow Lake Wind Farm  
Nodin Kitagan Limited Partnership and Nodin Kitagan 2  
Limited Partnership, through their General Partners  
Shongwish Nodin Kitagan GP Corp. and Shongwish  
Nodin Kitagan 2 GP Corp.

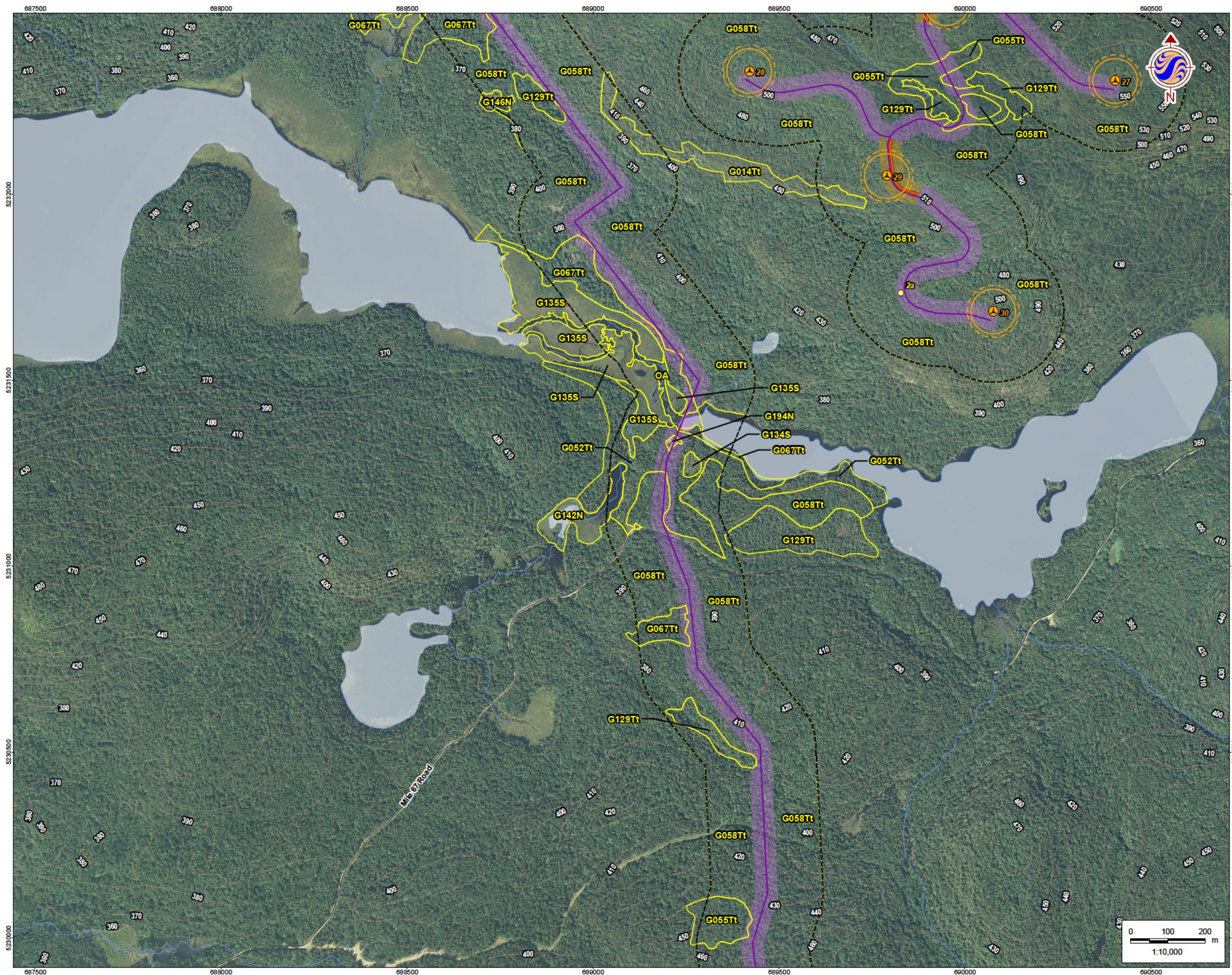
Figure No.

3.6

Title

**ELC/FEC Vegetation Communities**





## Legend

- 120m Zone of Investigation
- Project Components**
  - Turbine Location
  - Gate Location
  - Meteorological Tower
  - Proposed Water Extraction Location
  - Access Road (New)
  - Access Road (Upgrade)
  - Overhead/Underground Collector Line
  - Access Road Corridor
  - Collector Line Corridor
  - Turbine Sweep Area
  - Turbine Laydown Area
  - Construction Compound
  - Construction Compound & Welfare Building
  - Construction Compound & Transformer Station/Operations & Maintenance Building
- Existing Features**
  - Expressway / Highway
  - Road
  - Elevation Contour
  - Existing Transmission Line
  - Watercourse
  - Waterbody
  - Patent Land
- Natural Features**
  - Vegetation Community Boundary

## ELC/FEC Legend

- G014Tt Very Shallow, Dry to Fresh: Conifer
- G033Tt Dry, Sandy: Red Pine - White Pine Conifer
- G050Tt Dry to Fresh, Coarse: Pine - Black Spruce Conifer
- G052Tt Dry to Fresh, Coarse: Spruce - Fir Conifer
- G053Tt Dry to Fresh, Coarse: Conifer
- G055Tt Dry to Fresh, Coarse: Aspen - Birch
- G058Tt Dry to Fresh, Coarse: Maple Hardwood
- G067Tt Moist, Coarse: Spruce - Fir Conifer
- G070Tt Moist, Coarse: Aspen - Birch Hardwood
- G129Tt Organic Rich Conifer Swamp
- G158Tt Cliff
- G224Tt Mineral Rich Conifer Swamp
- G134S Mineral Thicket Swamp
- G135S Organic Thicket Swamp
- G142N Mineral Meadow Marsh
- G144N Organic Meadow Marsh
- G149N Organic Shallow Marsh
- G152N Open Water Marsh: Organic
- G136Tt Sparse Treed Fen
- G139S Poor Fen
- G146N Open Shore Fen
- G045NH Dry to Fresh, Coarse: Meadow
- G047S Dry to Fresh, Coarse: Shrub
- G049Tt Dry to Fresh, Coarse: Jack Pine - Black Spruce Dominated
- G059Tt Dry to Fresh, Coarse: Mixedwood
- G142NH Mineral Meadow Marsh
- G191X Active Waste Disposal / Landfill
- G193X Active Coarse Clean Fill
- G194N Coarse Clean Fill
- OA Open Aquatic

## Notes

- Coordinate System: NAD 1983 UTM Zone 16N
- Base features produced under license with the Ontario Ministry of Natural Resources © Queen's Printer for Ontario, 2013.
- Orthographic imagery provided by © USGS, 2013. Imagery taken in 2008.



**Stantec**

Client/Project

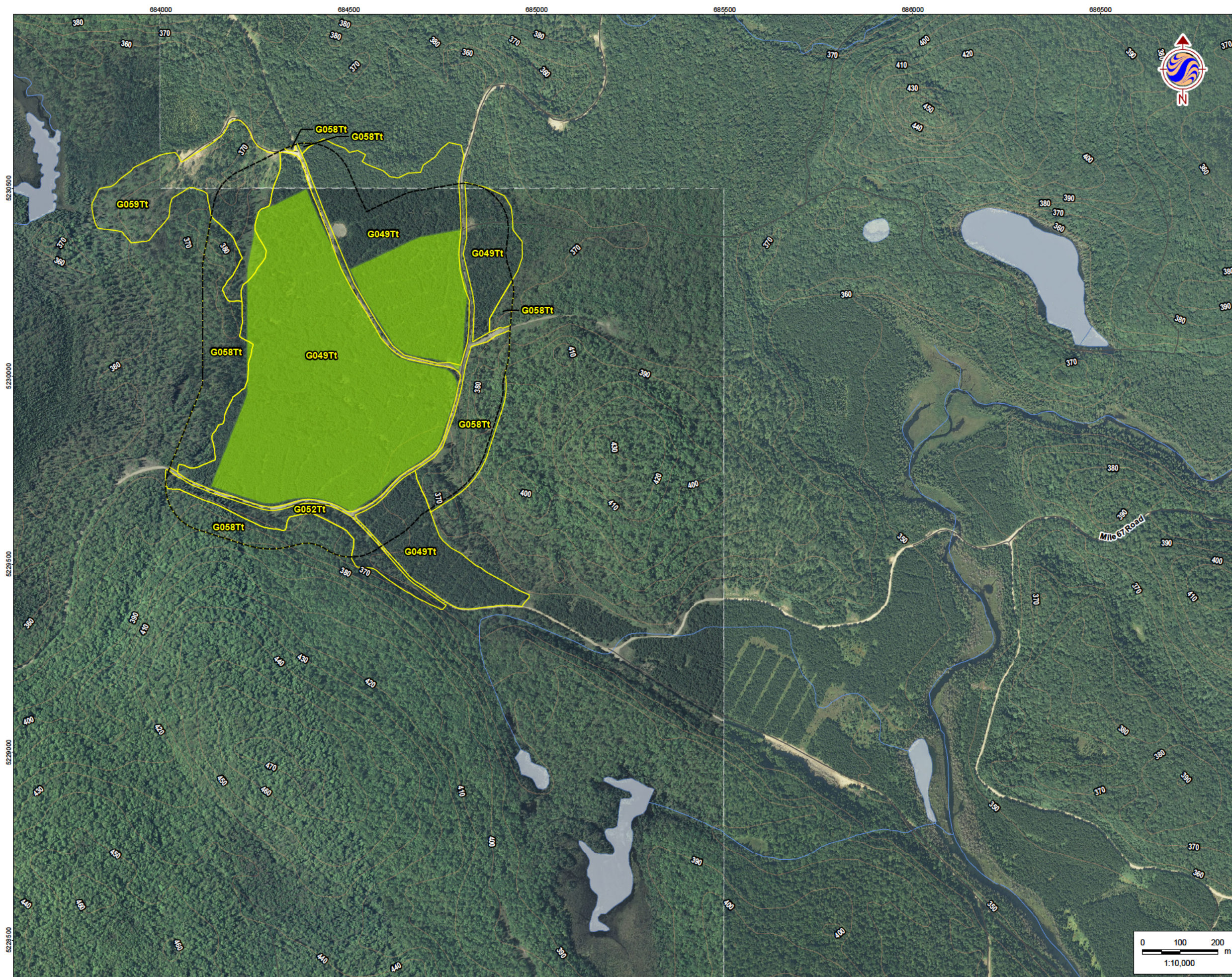
Bow Lake Wind Farm  
Nodin Kitagan Limited Partnership and Nodin Kitagan 2  
Limited Partnership, through their General Partners  
Shongwish Nodin Kitagan GP Corp. and Shongwish  
Nodin Kitagan 2 GP Corp.

Figure No.  
**3.7**

Title

**ELC/FEC Vegetation Communities**





### Legend

120m Zone of Investigation

Project Components

Turbine Location

Gate Location

Meteorological Tower

Proposed Water Extraction Location

Access Road (New)

Access Road (Upgrade)

Overhead/Underground Collector Line

Access Road Corridor

Collector Line Corridor

Turbine Sweep Area

Turbine Laydown Area

Construction Compound

Construction Compound & Welfare Building

Construction Compound & Transformer Station/Operations & Maintenance Building

Existing Features

Expressway / Highway

Road

Elevation Contour

Existing Transmission Line

Watercourse

Waterbody

Patent Land

Natural Features


Vegetation Community Boundary

### ELC/FEC Legend

G014Tt	Very Shallow, Dry to Fresh: Conifer
G033Tt	Dry, Sandy: Red Pine - White Pine Conifer
G050Tt	Dry to Fresh, Coarse: Pine - Black Spruce Conifer
G052Tt	Dry to Fresh, Coarse: Spruce - Fir Conifer
G053Tt	Dry to Fresh, Coarse: Conifer
G055Tt	Dry to Fresh, Coarse: Aspen - Birch
G058Tt	Dry to Fresh, Coarse: Maple Hardwood
G067Tt	Moist, Coarse: Spruce - Fir Conifer
G070Tt	Moist, Coarse: Aspen - Birch Hardwood
G129Tt	Organic Rich Conifer Swamp
G158Tt	Cliff
G224Tt	Mineral Rich Conifer Swamp
G134S	Mineral Thicket Swamp
G135S	Organic Thicket Swamp
G142N	Mineral Meadow Marsh
G144N	Organic Meadow Marsh
G149N	Organic Shallow Marsh
G152N	Open Water Marsh: Organic
G136Tt	Sparse Treed Fen
G139S	Poor Fen
G146N	Open Shore Fen
G045NH	Dry to Fresh, Coarse: Meadow
G047S	Dry to Fresh, Coarse: Shrub
G049Tt	Dry to Fresh, Coarse: Jack Pine - Black Spruce Dominated
G059Tt	Dry to Fresh, Coarse: Mixedwood
G142NH	Mineral Meadow Marsh
G191X	Active Waste Disposal / Landfill
G193X	Active Coarse Clean Fill
G194N	Coarse Clean Fill
OA	Open Aquatic

### Notes

- Coordinate System: NAD 1983 UTM Zone 16N
- Base features produced under license with the Ontario Ministry of Natural Resources © Queen's Printer for Ontario, 2013.
- Orthographic imagery provided by © USGS, 2013. Imagery taken in 2008.



January 2013  
160960771

Client/Project

Bow Lake Wind Farm  
Nodin Kitagan Limited Partnership and Nodin Kitagan 2  
Limited Partnership, through their General Partners  
Shongwish Nodin Kitagan GP Corp. and Shongwish  
Nodin Kitagan 2 GP Corp.

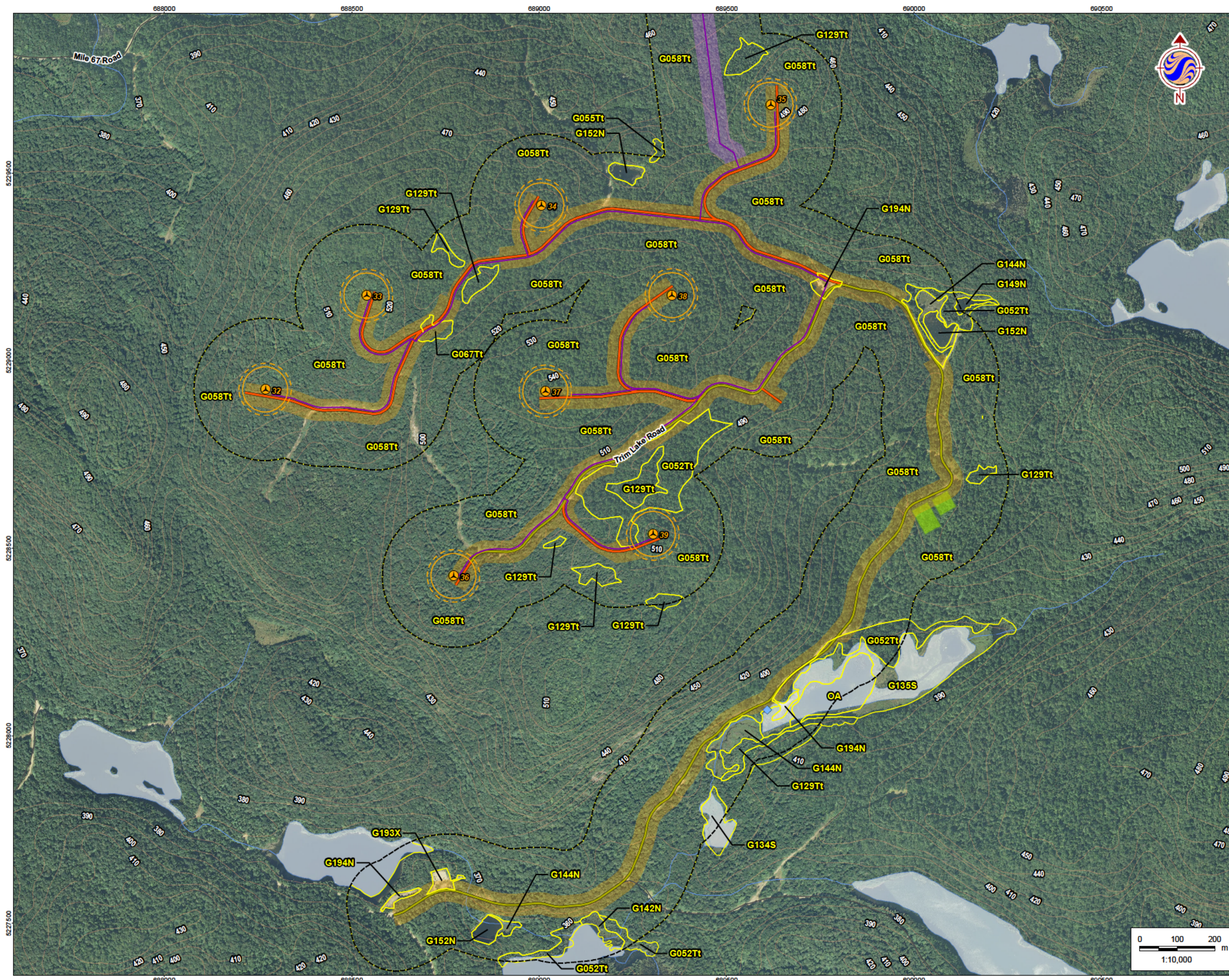
Figure No.

3.8

Title

ELC/FEC Vegetation Communities





## Legend

- 120m Zone of Investigation
- Project Components**
  - Turbine Location
  - Gate Location
  - Meteorological Tower
  - Proposed Water Extraction Location
  - Access Road (New)
  - Access Road (Upgrade)
  - Overhead/Underground Collector Line
  - Access Road Corridor
  - Collector Line Corridor
  - Turbine Sweep Area
  - Turbine Laydown Area
  - Construction Compound
  - Construction Compound & Welfare Building
  - Construction Compound & Transformer Station/Operations & Maintenance Building
- Existing Features**
  - Expressway / Highway
  - Road
  - Elevation Contour
  - Existing Transmission Line
  - Watercourse
  - Waterbody
  - Patent Land
  - Natural Features**
    - Vegetation Community Boundary

## ELC/FEC Legend

- |        |  |
|--------|--|
| G014Tt | Very Shallow, Dry to Fresh: Conifer                      |
| G033Tt | Dry, Sandy: Red Pine - White Pine Conifer                |
| G050Tt | Dry to Fresh, Coarse: Pine - Black Spruce Conifer        |
| G052Tt | Dry to Fresh, Coarse: Spruce - Fir Conifer               |
| G053Tt | Dry to Fresh, Coarse: Conifer                            |
| G055Tt | Dry to Fresh, Coarse: Aspen - Birch                      |
| G058Tt | Dry to Fresh, Coarse: Maple Hardwood                     |
| G067Tt | Moist, Coarse: Spruce - Fir Conifer                      |
| G070Tt | Moist, Coarse: Aspen - Birch Hardwood                    |
| G129Tt | Organic Rich Conifer Swamp                               |
| G158Tt | Cliff  |
| G224Tt | Mineral Rich Conifer Swamp                               |
| G134S  | Mineral Thicket Swamp                                    |
| G135S  | Organic Thicket Swamp                                    |
| G142N  | Mineral Meadow Marsh                                     |
| G144N  | Organic Meadow Marsh                                     |
| G149N  | Organic Shallow Marsh                                    |
| G152N  | Open Water Marsh: Organic                                |
| G136Tt | Sparse Treed Fen   |
| G139S  | Poor Fen   |
| G146N  | Open Shore Fen   |
| G045NH | Dry to Fresh, Coarse: Meadow                             |
| G047S  | Dry to Fresh, Coarse: Shrub                              |
| G049Tt | Dry to Fresh, Coarse: Jack Pine - Black Spruce Dominated |
| G059Tt | Dry to Fresh, Coarse: Mixedwood                          |
| G142NH | Mineral Meadow Marsh                                     |
| G191X  | Active Waste Disposal / Landfill                         |
| G193X  | Active Coarse Clean Fill                                 |
| G194N  | Coarse Clean Fill  |
| OA     | Open Aquatic   |

## Notes

- Coordinate System: NAD 1983 UTM Zone 16N
- Base features produced under license with the Ontario Ministry of Natural Resources © Queen's Printer for Ontario, 2013.
- Orthographic imagery provided by © USGS, 2013. Imagery taken in 2008.



**Stantec**

January 2013  
160960771

Client/Project

Bow Lake Wind Farm  
Nodin Kitagan Limited Partnership and Nodin Kitagan 2  
Limited Partnership, through their General Partners  
Shongwish Nodin Kitagan GP Corp. and Shongwish  
Nodin Kitagan 2 GP Corp.

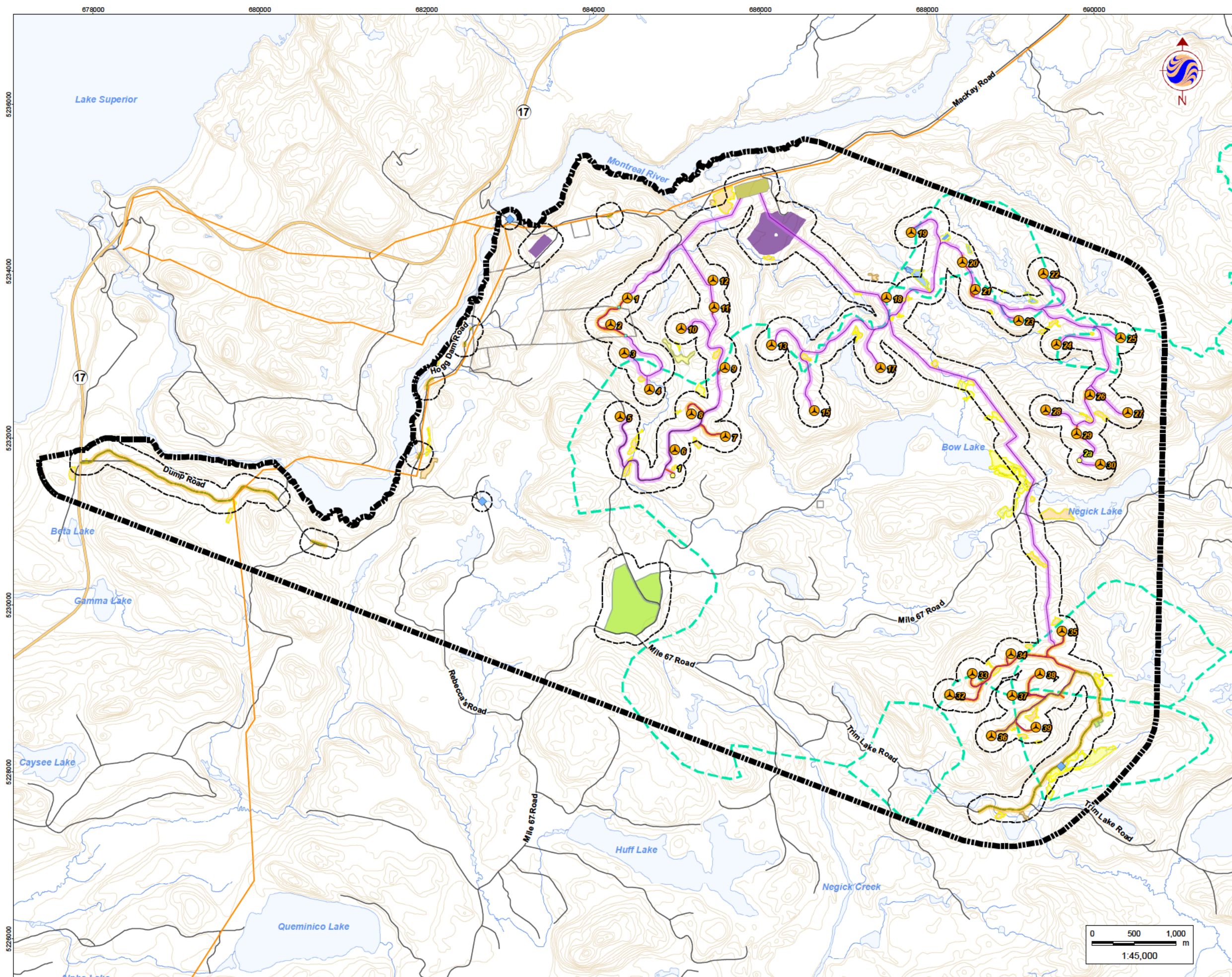
Figure No.

3.9

Title

**ELC/FEC Vegetation Communities**





## Legend

- Study Area
- 120m Zone of Investigation
- Project Components
  - Turbine Location
  - Gate Location
  - Meteorological Tower
  - Proposed Water Extraction Location
  - Access Road (New)
  - Access Road (Upgrade)
  - Overhead/Underground Collector Line
  - Access Road Corridor
  - Collector Line Corridor
  - Construction Compound
  - Construction Compound & Welfare Building
  - Construction Compound & Transformer Station/Operations & Maintenance Building
- Existing Features
  - Expressway / Highway
  - Road
  - Elevation Contour
  - Existing Transmission Line
  - Watercourse
  - Waterbody
  - Patent Land
- Natural Features
  - Catchment Boundary
  - Vegetation Community Boundary
- Wetlands (delineated by Stantec - SWET)
  - Previously Significant Wetland - PSW
  - Previously Evaluated Wetland - Non-PSW
  - Previously Unidentified Wetland
  - Previously Unidentified Wetland Recommended for Inclusion in PSW

## Notes

- Coordinate System: NAD 1983 UTM Zone 16N
- Base features produced under license with the Ontario Ministry of Natural Resources © Queen's Printer for Ontario, 2013.



**Stantec**

January 2013  
160960771

Client/Project

Bow Lake Wind Farm  
Nodin Kitagan Limited Partnership and Nodin Kitagan 2 Limited Partnership, through their General Partners Shongwish Nodin Kitagan GP Corp. and Shongwish Nodin Kitagan 2 GP Corp.

Figure No.

4.0

Title

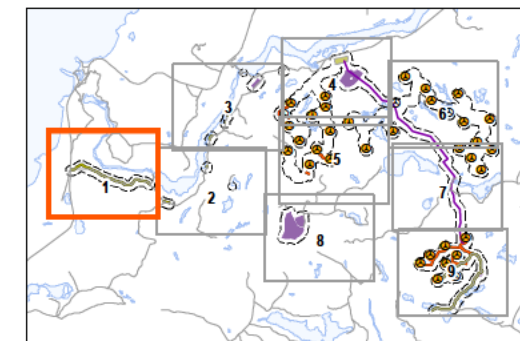
**Wetlands**





## Legend

- 120m Zone of Investigation
- Turbine Location
- Gate Location
- Meteorological Tower
- Proposed Water Extraction Location
- Access Road (New)
- Access Road (Upgrade)
- Overhead/Underground Collector Line
- Access Road Corridor
- Collector Line Corridor
- Turbine Sweep Area
- Turbine Laydown Area
- Construction Compound
- Construction Compound & Welfare Building
- Construction Compound & Transformer Station/Operations & Maintenance Building
- Existing Features
  - Expressway / Highway
  - Road
  - Elevation Contour
  - Existing Transmission Line
  - Watercourse
  - Waterbody
  - Patent Land
- Natural Features
  - Catchment Boundary
  - Vegetation Community Boundary
- Wetlands (delineated by Stantec - SWET)
  - Previously Significant Wetland - PSW
  - Previously Evaluated Wetland - Non-PSW
  - Previously Unidentified Wetland
  - Previously Unidentified Wetland Recommended for Inclusion in PSW



## Notes

- Coordinate System: NAD 1983 UTM Zone 16N
- Base features produced under license with the Ontario Ministry of Natural Resources © Queen's Printer for Ontario, 2013.
- Orthographic imagery provided by © USGS, 2013. Imagery taken in 2008.



**Stantec**

January 2013  
16060771

Client/Project

Bow Lake Wind Farm  
Nodin Kitagan Limited Partnership and Nodin Kitagan 2  
Limited Partnership, through their General Partners  
Shongwish Nodin Kitagan GP Corp. and Shongwish  
Nodin Kitagan 2 GP Corp.

Figure No.

**4.1**

Title

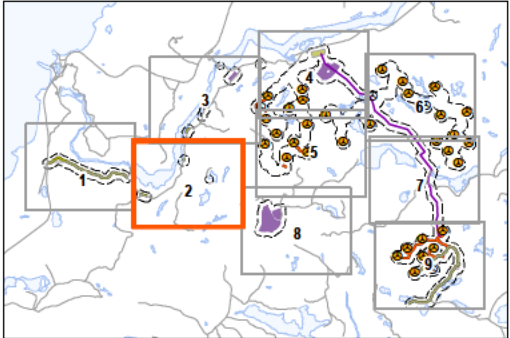
**Wetlands**





Legend

- 120m Zone of Investigation
- Turbine Location
- Gate Location
- Meteorological Tower
- Proposed Water Extraction Location
- Access Road (New)
- Access Road (Upgrade)
- Overhead/Underground Collector Line
- Access Road Corridor
- Collector Line Corridor
- Turbine Sweep Area
- Turbine Laydown Area
- Construction Compound
- Construction Compound & Welfare Building
- Construction Compound & Transformer Station/Operations & Maintenance Building
- Existing Features
  - Expressway / Highway
  - Road
  - Elevation Contour
  - Existing Transmission Line
  - Watercourse
  - Waterbody
  - Patent Land
- Natural Features
  - Catchment Boundary
  - Vegetation Community Boundary
- Wetlands (delineated by Stantec - SWET)
  - Previously Significant Wetland - PSW
  - Previously Evaluated Wetland - Non-PSW
  - Previously Unidentified Wetland
  - Previously Unidentified Wetland Recommended for Inclusion in PSW



- Notes
- Coordinate System: NAD 1983 UTM Zone 16N
  - Base features produced under license with the Ontario Ministry of Natural Resources © Queen's Printer for Ontario, 2013.
  - Orthographic imagery provided by © USGS, 2013. Imagery taken in 2008.



Stantec

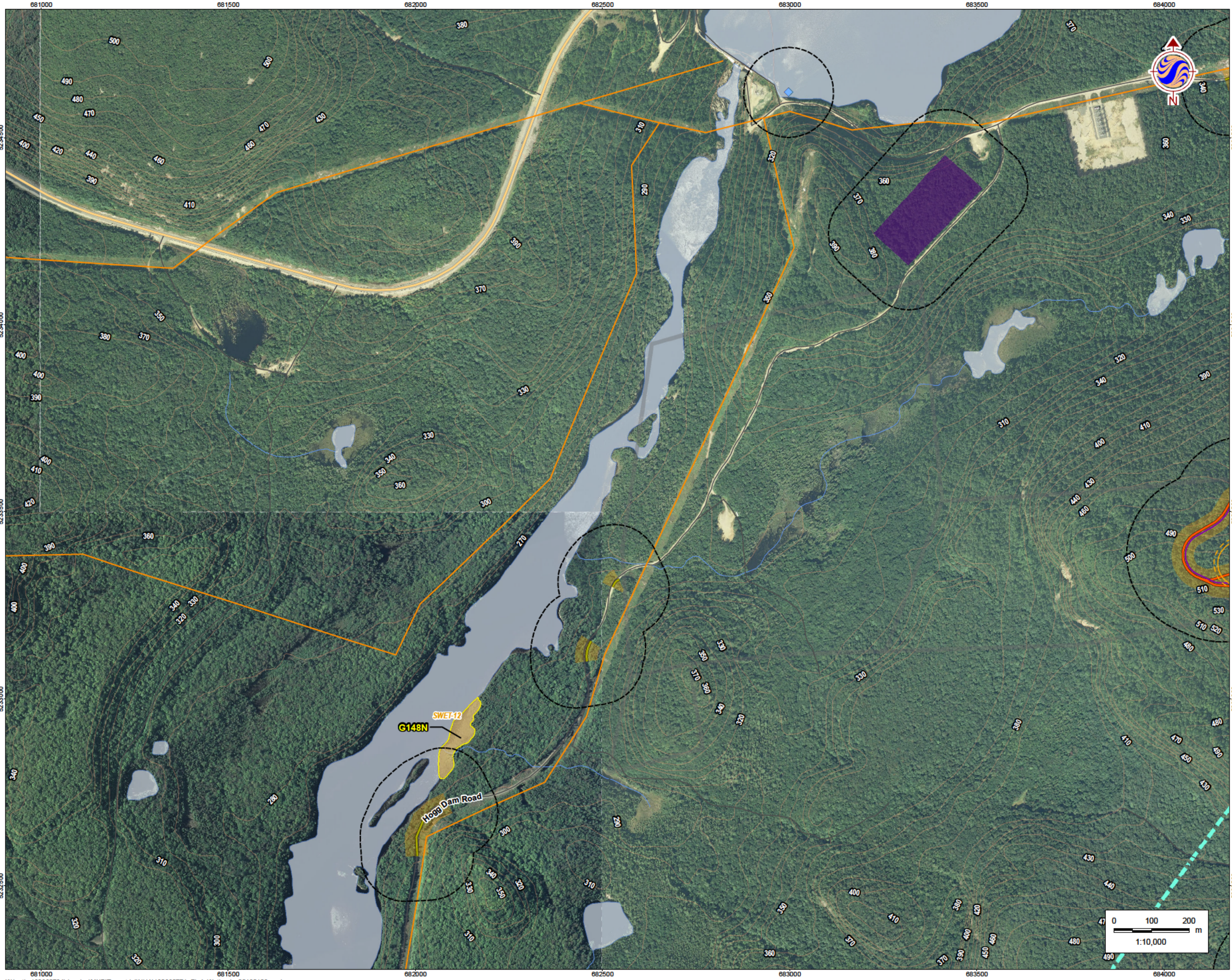
January 2013  
160960771

Client/Project  
Bow Lake Wind Farm  
Nodin Kitagan Limited Partnership and Nodin Kitagan 2  
Limited Partnership, through their General Partners  
Shongwish Nodin Kitagan GP Corp. and Shongwish  
Nodin Kitagan 2 GP Corp.

Figure No.  
4.2

Title  
Wetlands





**Legend**

120m Zone of Investigation

Turbine Location

Gate Location

Meteorological Tower

Proposed Water Extraction Location

Access Road (New)

Access Road (Upgrade)

Overhead/Underground Collector Line

Access Road Corridor

Collector Line Corridor

Turbine Sweep Area

Turbine Laydown Area

Construction Compound

Construction Compound & Welfare Building

Construction Compound & Transformer Station/Operations & Maintenance Building

Existing Features

Expressway / Highway

Road

Elevation Contour

Existing Transmission Line

Watercourse

Waterbody

Patent Land

Natural Features

Catchment Boundary

Vegetation Community Boundary

Wetlands (delineated by Stantec - SWET)

Previously Significant Wetland - PSW

Previously Evaluated Wetland - Non-PSW

Previously Unidentified Wetland

Previously Unidentified Wetland Recommended for Inclusion in PSW

**Notes**

1. Coordinate System: NAD 1983 UTM Zone 16N

2. Base features produced under license with the Ontario Ministry of Natural Resources © Queen's Printer for Ontario, 2013.

3. Orthographic imagery provided by © USGS, 2013. Imagery taken in 2008.

**Stantec**

January 2013  
160960771

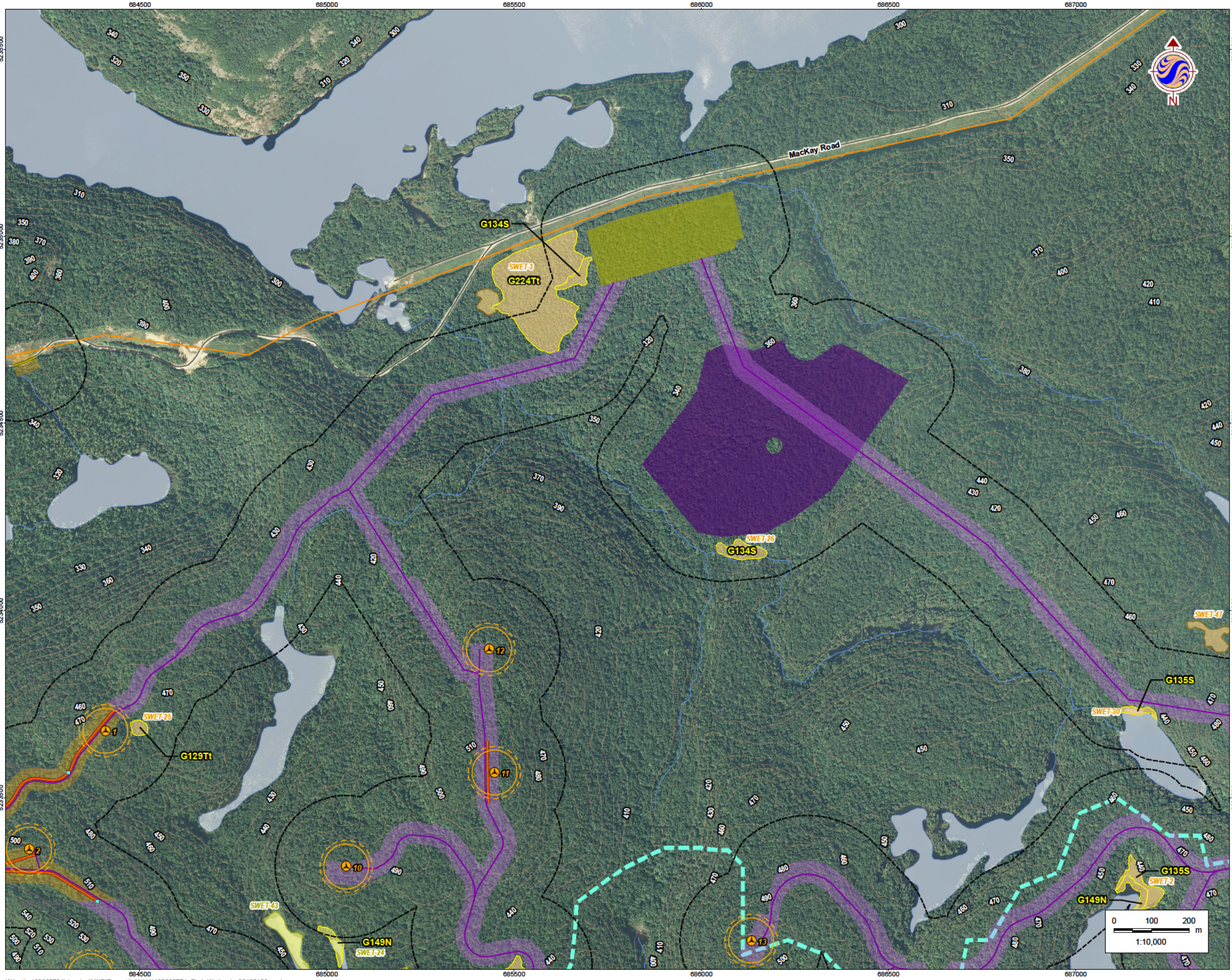
Client/Project  
Bow Lake Wind Farm  
Nodin Kitagan Limited Partnership and Nodin Kitagan 2 Limited Partnership, through their General Partners Shongwish Nodin Kitagan GP Corp. and Shongwish Nodin Kitagan 2 GP Corp.

Figure No.  
4.3

Title  
**Wetlands**

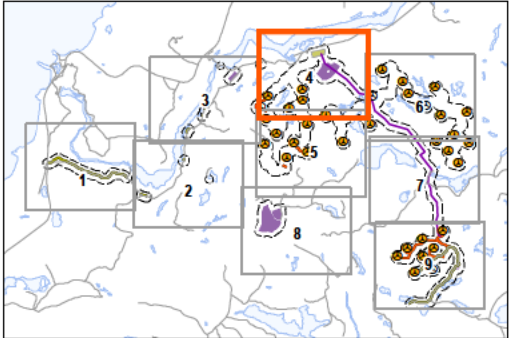
W:\active\160960734\drawing\MXD\Terrestrial\NHA\160960771\_Fig4\_Wetlands\_20130123.mxd  
Revised: 2013-01-23 By: pworsell





**Legend**

- 120m Zone of Investigation
- Turbine Location
- Gate Location
- Meteorological Tower
- Proposed Water Extraction Location
- Access Road (New)
- Access Road (Upgrade)
- Overhead/Underground Collector Line
- Access Road Corridor
- Collector Line Corridor
- Turbine Sweep Area
- Turbine Laydown Area
- Construction Compound
- Construction Compound & Welfare Building
- Construction Compound & Transformer Station/Operations & Maintenance Building
- Existing Features
  - Expressway / Highway
  - Road
  - Elevation Contour
  - Existing Transmission Line
  - Watercourse
  - Waterbody
  - Patent Land
- Natural Features
  - Catchment Boundary
  - Vegetation Community Boundary
- Wetlands (delineated by Stantec - SWET)
  - Previously Significant Wetland - PSW
  - Previously Evaluated Wetland - Non-PSW
  - Previously Unidentified Wetland
  - Previously Unidentified Wetland Recommended for Inclusion in PSW



- Notes**
- Coordinate System: NAD 1983 UTM Zone 16N
  - Base features produced under license with the Ontario Ministry of Natural Resources © Queen's Printer for Ontario, 2013.
  - Orthographic imagery provided by © USGS, 2013. Imagery taken in 2008.



**Stantec**

January 2013  
160960771

Client/Project  
Bow Lake Wind Farm  
Nodin Kitagan Limited Partnership and Nodin Kitagan 2  
Limited Partnership, through their General Partners  
Shongwish Nodin Kitagan GP Corp. and Shongwish  
Nodin Kitagan 2 GP Corp.

Figure No.  
**4.4**

Title  
**Wetlands**





**Legend**

120m Zone of Investigation

Turbine Location

Gate Location

Meteorological Tower

Proposed Water Extraction Location

Access Road (New)

Access Road (Upgrade)

Overhead/Underground Collector Line

Access Road Corridor

Collector Line Corridor

Turbine Sweep Area

Turbine Laydown Area

Construction Compound

Construction Compound & Welfare Building

Construction Compound & Transformer Station/Operations & Maintenance Building

Expressway / Highway

Road

Elevation Contour

Existing Transmission Line

Watercourse

Waterbody

Patent Land

Natural Features

Catchment Boundary

Vegetation Community Boundary

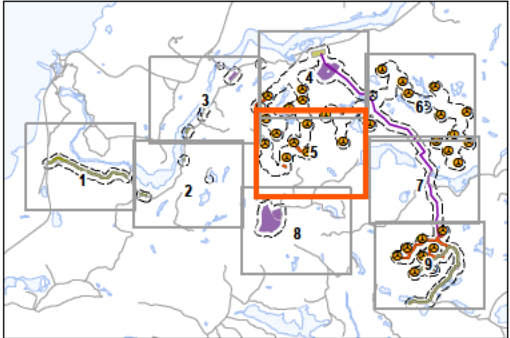
Wetlands (delineated by Stantec - SWET)

Previously Significant Wetland - PSW

Previously Evaluated Wetland - Non-PSW

Previously Unidentified Wetland

Previously Unidentified Wetland Recommended for Inclusion in PSW



- Notes**
1. Coordinate System: NAD 1983 UTM Zone 16N

2. Base features produced under license with the Ontario Ministry of Natural Resources © Queen's Printer for Ontario, 2013.

3. Orthographic imagery provided by © USGS, 2013. Imagery taken in 2008.



**Stantec**

Client/Project

Bow Lake Wind Farm  
Nodin Kitagan Limited Partnership and Nodin Kitagan 2  
Limited Partnership, through their General Partners  
Shongwish Nodin Kitagan GP Corp. and Shongwish  
Nodin Kitagan 2 GP Corp.

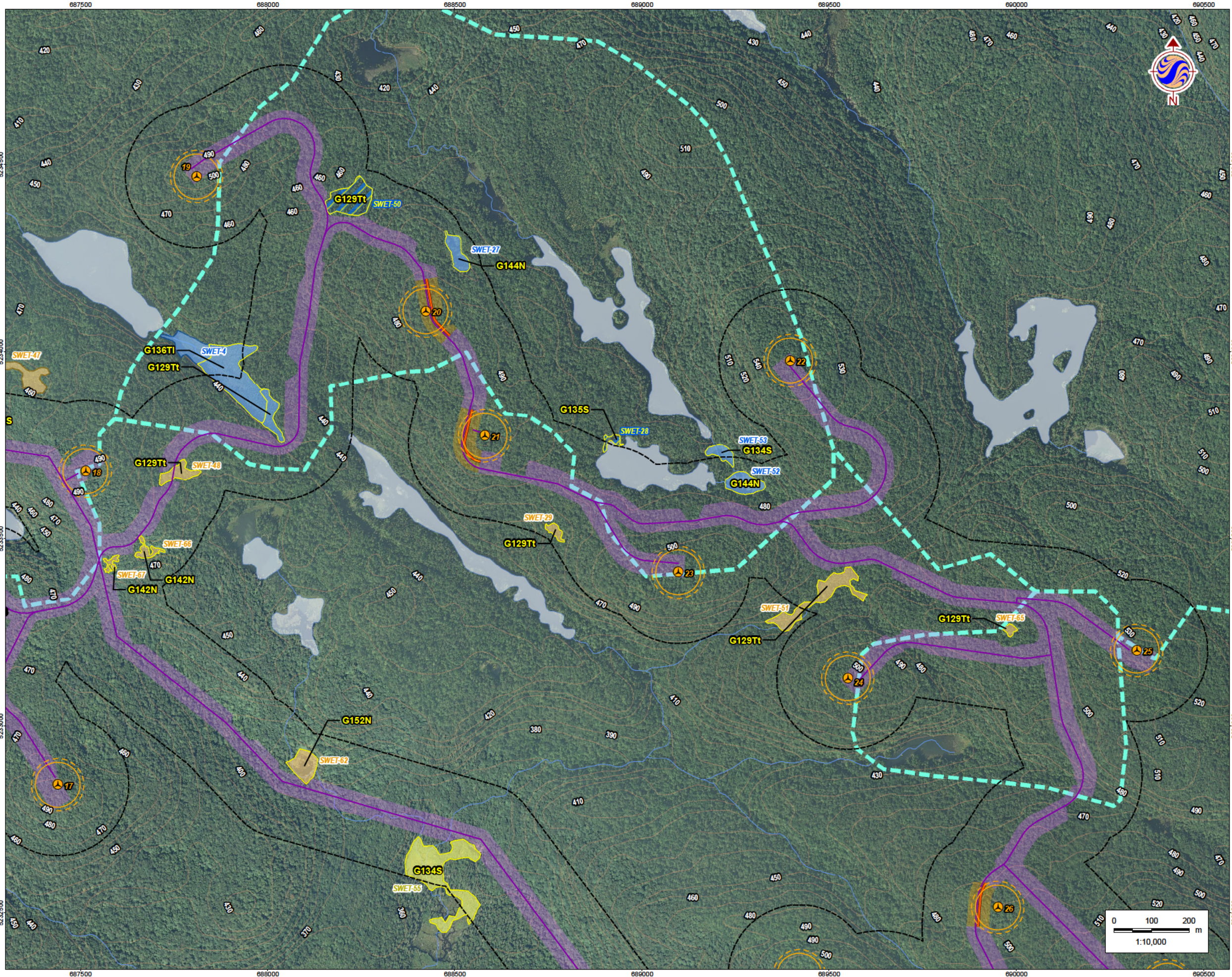
Figure No.

4.5

Title

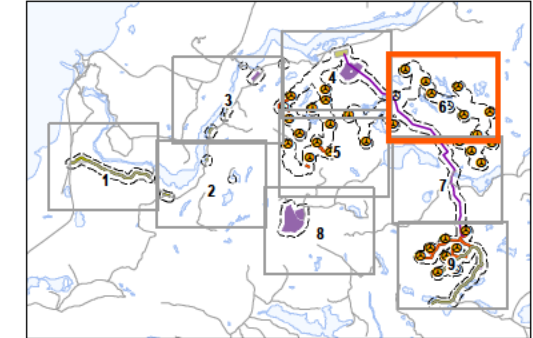
Wetlands





**Legend**

- 120m Zone of Investigation
- Turbine Location
- Gate Location
- Meteorological Tower
- Proposed Water Extraction Location
- Access Road (New)
- Access Road (Upgrade)
- Overhead/Underground Collector Line
- Access Road Corridor
- Collector Line Corridor
- Turbine Sweep Area
- Turbine Laydown Area
- Construction Compound
- Construction Compound & Welfare Building
- Construction Compound & Transformer Station/Operations & Maintenance Building
- Existing Features
  - Expressway / Highway
  - Road
  - Elevation Contour
  - Existing Transmission Line
  - Watercourse
  - Waterbody
  - Patent Land
- Natural Features
  - Catchment Boundary
  - Vegetation Community Boundary
- Wetlands (delineated by Stantec - SWET)
  - Previously Significant Wetland - PSW
  - Previously Evaluated Wetland - Non-PSW
  - Previously Unidentified Wetland
  - Previously Unidentified Wetland Recommended for Inclusion in PSW



- Notes**
- Coordinate System: NAD 1983 UTM Zone 16N
  - Base features produced under license with the Ontario Ministry of Natural Resources © Queen's Printer for Ontario, 2013.
  - Orthographic imagery provided by © USGS, 2013. Imagery taken in 2008.



**Stantec**

January 2013  
160960771

Client/Project  
Bow Lake Wind Farm  
Nodin Kitagan Limited Partnership and Nodin Kitagan 2  
Limited Partnership, through their General Partners  
Shongwish Nodin Kitagan GP Corp. and Shongwish  
Nodin Kitagan 2 GP Corp.

Figure No.  
**4.6**

Title  
**Wetlands**